
❖ Weedman Newsletter ❖

Volume 44 Issue 1

Spring 2011

Entering the 44th Year of Publication!

This all started in 1967 when **Paul** and **Marianne Montgomery** innocently started a publication aimed at sharing family and genealogical information on the Weedman family. After Paul died, Marianne continued with to put out the quarterly publication until she retired in 2005. **Chantal Weedman** and her dad, **William Weedman**, took the reins for a short time. In 2006, Nick Weedman became the editor.

Although our print version doesn't reach as many subscribers as it once did, we believe we have far more readers of the on-line version. And so, the journey continues.....

Subscription Renewals Due

In the first edition of each year, we remind subscribers to send a donation of \$5.00 per year to continue to receive the Newsletter. We are doing the same this year.

For those who are computer savvy, we now offer an alternate way of getting the Newsletter. The on line version will be offered at no cost to those inclined to get the publication in that manner.

Here is how we will handle on-line subscribers. We ask that you send an e-mail to Editor Nick Weedman (nick@weedman.org) and ask to receive notification that a new issue of the Weedman Newsletter has been posted to

the web site. We will add you to the mailing list for those subscribers and once a new issue is posted, an e-mail will be sent advising it is ready for viewing. It is that simple!

Again, this will be offered at no cost but we will restrict participants to those with a true interest in sharing family information or in pursuing the family genealogy.

Many will prefer to receive the standard paper copy and the cost of this will remain, as it has for 43 years at \$5.00. We will encourage new subscribers to use the on-line version but will still offer the standard hard copy to those who prefer.

So, if you want to receive an e-mail when the Newsletter is uploaded to the web site, a simple e-mail to Nick Weedman will trigger such an action.

Summer Issue May Be Delayed

We have been invited to return to Europe this summer and will start our visit in the Provence region of France. Although still in the early planning stage at this point, we may go to Germany to try to determine

(Continued on page 2)

Inside This Issue

German Roots?	2
Chelsea Weedman Update	2
Obituaries	3
Various Project Updates	7
Abraham Lincoln Weedman Family	8

This issue marks the start of the 44th year of publication of the *Weedman Newsletter*. Your continued interest is highly appreciated!

(Continued from page 1)

what resources might be available to help in search of what we consider to be our likely source of European roots. Because the trip is set for June, it is likely that we will have to delay publication of the summer issue due to these travel commitments.

Possible German Roots

The newly upgraded site, www.FamilySearch.com, has some excellent information on marriages, births and deaths in the 1700s. The number of Widman entries during the period from 1720 through 1750 (the year of arrival for **Christian Weedman** or **Christian Widman**) is very large. But, it is striking that the vast majority of **Widman** family activity is in Baden-Wurtemberg and more specifically an area west of Stuttgart. While we are not able to comfortably locate the likely family of our immigrant ancestor, we feel that this is the area of primary interest. Our objective is

to determine if there are genealogical societies, genealogical research facilities or other organizations who might be able to further our work there.

This Issue

We have been saddened by the unusually large number of Weedman deaths that have occurred so far in 2011. In Grayson County, KY two Weedmans died on the same date. In Florida, two brothers died, one in late 2010 and the other in 2011. So, much of this issue will be taken up with obituaries.

Chelsea Weedman Named Big Ten Conference Freshman Swimmer of the Year

Chelsea Weedman of San Diego, CA who is a freshman at Penn State University has excelled in her first year at the

(Continued on page 3)

Many have always believed the roots of the Christian Weedman family are German. Hopefully we can make progress on this prospect!

About the Weedman Newsletter

The *Weedman Newsletter* is a quarterly family publication with emphasis on the genealogy of the Weedman and allied families. It is distributed to interested family members, selected genealogical societies and libraries. Circulation is 120.

The *Newsletter* is edited, published and distributed by **Nick Weedman**. All address changes, new subscriptions, etc. should be sent to him.

Articles for publication in the Newsletter are highly welcomed. They must have some relevance to the family and those with a genealogical flavor are of particular interest.

Editor and Publisher: **Nick Weedman**
130 Berry Creek Drive
Flat Rock NC 28731-8531
E-mail address: nick@weedman.org

Visit the Weedman Web-page at: <http://www.weedman.org>.

Queries regarding the Weedman family or allied lines are welcomed. Attention will be given to each and for those which cannot be answered by family genealogists, publication in the *Newsletter* will be made.

The *Weedman Newsletter* is a registered publication (ISSN 0883-7791).

(Continued from page 2)

University. She was recruited by the school and is the recipient of an athletic scholarship in the women's swimming program.

On February 4, 2011 she was named the Big Ten Conference female Swimmer of the Week after Penn State University, ranked number 25 in the nation upset number 15 Michigan State University at a conference meet in Ann Arbor.

In March, at the Big Ten Conference swimming meet at the University of Indiana in Bloomington, Chelsea set a new Penn State record for the individual medley race. Following that, she was named the Big Ten Conference Freshman of the Year!

We congratulate Chelsea on her many accomplishments in her freshman year at Penn State University! She has brought a lot of recognition and pride to her immediate and extended family.

Chelsea Weedman is a pre-med student and is the daughter of **Paul** and **Emily Weedman** of Poway, California.

Obituaries

Anna M. (Womack) Weedman

Anna M. Weedman, 83, Noblesville, IN died Jan. 10, 2010, at Prairie Lakes Health Campus, Noblesville. Mrs. Weedman was a homemaker. She also worked as a Nurse Aide at Riverview Hospital for nearly 10 years before retiring in 1988.

She was born Oct. 7, 1927, in Russell Springs, Ky., the daughter of **Otha** and **Lola Foley Womack**. She was married to **Jesse E. Weedman** who preceded her in death in 1977.

She is survived by a daughter, **Jane Timmons (Daniel)**; two sons, **Leonard Weedman** and **Jesse Weedman (Mary Ellen)**; a brother, **William Womack**; four granddaughters, **Carrie Stinson**, **Rachael Weedman**, **Jan Robertson** and **Fawn Tomasino**; three grandsons, **Jesse Cook**, **Luke Timmons** and **Doug Skaggs**; 13 great-grandchildren, **Jacob**, **Jordan**, **Hannah** and **Connor Stinson**, **Jessica** and **Ronnie Cook**, **Jonathon Valmore**, **Olivia Timmons**, **Kayla**, **Jesse**, **Brad** and **Brent Skaggs**, and **Michael Tomasino**.

In addition to her husband, she was preceded in death by two granddaughters, **Holly** and **Lorna**. Burial was on January 10, 2011 at Crownland Cemetery, Noblesville, Indiana.

The lineage of Jesse E. Weedman, Sr. was: Jesse E. Weedman, Sr.⁶, Homer Willis Weedman⁵, Jacob Willis Weedman⁴, Daniel Weedman³, Christian Weedman, Jr.² and Christian Weedman, Sr.¹.

Theresa Lynn Weedman Wooten

Teresa Lynn Wooten, 49, of Sandusky, Ohio died on January 20, 2011, at her home.

She was born Oct. 30, 1961, in Sandusky, to **Robert** and **Ellen (Stidham) Weedman**. She was a 1980 graduate of St. Mary High School and went on to graduate with honors from North Central State Nursing program where she belonged to the Phi Theta Kappa Sorority. She was previously employed by First Choice Home Health Care as a nurse. Teresa cherished spending time with her family and friends at Father's Heart Family Church. She enjoyed shopping and garage sales. Most fondly, she could be

(Continued on page 4)

The number of deaths recently reported has been extremely high. This issue will primarily cover those events.

Please advise of any births, marriages, or other family events for publication in the **Weedman Newsletter**.

(Continued from page 3)

found spending time with her precious dogs she called her "Babydolls."

She is survived by her husband, **Jerry Wooten**; son, **John (Marsha) Wooten** of Akron; mother, **Ellen (Stidham) Weedman** of Sandusky; grandchildren, **Jonah** and **Samantha Wooten**; sisters, **Tamie Rippon** of Norwalk and **Susan Hershiser** of Sandusky; nieces and nephews, **Gregory Rippon**, **Jason Rippon**, **Amber Rippon**, **Annie Hershiser** and **Nathan Hershiser** and numerous other aunts and uncles of Sandusky and Kentucky.

The lineage for **Theresa Weedman Wooten** is: **Theresa Weedman**⁸, **Robert Weedman**⁷, **Gustav Clinton Weedman**⁶, **Harvey Shinn Weedman**⁵, **Asa Weedman**⁴, **John Huhn Weedman, Sr.**³, **George Weedman**², and **Christian Weedman, Sr.**¹

Michael LeRoy Weedman

Michael LeRoy Weedman, 64, of Longview, Washington died January 10, 2011, at his home.

He was born March 3, 1946, in Kelso, to **William H. and Ila May (Zerby) Weedman**.

Mr. Weedman retired as a sawmill worker in 2007. He was serious and truthful, yet friendly, thoughtful and helpful to all.

Survivors include his parents in Longview; a son, **Jeff Weedman** of Spokane; a daughter, **Pam Zebley** of Longview; two brothers, **Vernon Weedman** in Oregon and **Philip Weedman** of Longview; and three sisters, **Ellen Hayes** of Longview, **Kathleen Rupe** of Castle Rock and **Melody Gemar** of Kelso. A graveside service was held on January 15, 2011 at Rose Valley Cemetery.

The lineage of **Michael LeRoy Weedman**

was: **Michael LeRoy Weedman**⁷, **William Howard Weedman**⁶, **Leslie Raphael Weedman**⁵, **Elisha Spurrier Weedman**⁴, **Daniel Weedman**³, **Christian Weedman, Jr.**² and **Christian Weedman, Sr.**¹.

Orville William (Pete) Weedman

Orville William 'Pete' Weedman, 87, died on January 30, 2011. Pete was born in The Dalles, Oregon and was a mechanic, a logger and a World War II veteran. He is survived by his daughters, **Suzanne Reid** and **Robin Wright**. A memorial service was held on February 24, 2011 in Willamette National Cemetery.

*Pete Weedman's lineage: Orville William Weedman*⁷, *Roy Willis Weedman*⁶, *Homer Willis Weedman*⁵, *Jacob Willis Weedman*⁴, *Daniel Weedman*³, *Christian Weedman, Jr.*² and *Christian Weedman, Sr.*¹.

Henry Wallace Weedman

Henry Wallace Weedman, age 68, of Caneyville, KY, passed away on February 3, 2011 in Leitchfield, Kentucky.

He was born on September 14, 1942, in Grayson County KY, the son of the late **Alton** and **Lena Ellen Anderson Weedman**. He was a retired security guard and supervisor for Campbell Hausfield and was saved at a young age and joined the Forest View United Baptist Church.



He is survived by his wife, **Shirley Ann Carroll Weedman**, two daughters,

(Continued on page 5)

(Continued from page 4)

Robin Ann Cooper (Larry) of Leitchfield and **Rhoda Jean Mudd (Bruce)** of Caneyville, one son, **Alan Wade Weedman (Melinda)** of Short Creek, three grandsons, **Chad Cooper** and **Todd** and **Terrance Weedman**, one great grandson, **Jackson Weedman**, four sisters, **Katy Cook** of Caneyville, **Odean Wheeler** of Louisville, KY, **Erma Spencer** of Hodgenville, KY and **Wilma Whitehead** of Leitchfield, two brothers, **Elton** and **Howard Weedman** both of Louisville, a sister-in-law, **Gladys Weedman** of Louisville and several nieces and nephews. He was preceded in death by two brothers, **Marvin** and **Loyd Weedman**.

Funeral services were on February 6, 2011 in Leitchfield with Bro. **Jerry Weedman** officiating. Burial was in the Si Hughes Cemetery.

Henry Weedman's lineage was: Henry Wallace Weedman⁷, Alton Weedman⁶, James Henry Weedman⁵, Willis Green Weedman, Sr.⁴, John Weedman³, Christian Weedman, Jr.² and Christian Weedman, Sr.¹.

Charles E. Weedman

Charles Edward Weedman, 67, of Falls of Rough, KY, passed away on February 3, 2011 at his home.

He was born on April 16, 1943, in Jefferson County KY, the son of the late **Robert S.** and **Minnie Bryant Weedman**. He was a truck driver.

He is survived by 3 sons, **Jesse Weedman** of Falls of Rough, KY; **Eric Weedman** of Cub Run, KY; and **Shane Weedman** of North Hollywood, CA, 3 brothers, **Bill Weedman** of Encinitas, CA, **SSGT (ret) Ronald Weedman** of Louisville, KY and **Bobby Weedman**, 4 grandchildren, and 2 great-grandchildren.

Charles Weedman's lineage was: Charles Edward Weedman⁷, Robert Shirley Weedman⁶, William Deward Weedman⁵, Amos George Weedman⁴, Stephen Weedman³, Christian Weedman, Jr.² and Christian Weedman, Sr.¹.

George W. Weedman

George Washington Weedman, age 90, of Plymouth, WI died on February 4, 2011 at the Sharon S. Richardson Hospice in Sheboygan Falls, WI.

He was born on February 22, 1920 in North Platte, Nebraska son of the late **Grover C.** and **Hulda (Mitzner) Weedman**. He attended school in Nebraska, and graduated from the University of Nebraska in 1943 with a degree in Dairy Science.

He then entered the United States Marine Corp. serving during WWII in the South Pacific. On May 3, 1947 he married **Joyce Boedeker** in Lancaster, Wisconsin. She preceded him in death on April 19, 2002.

He worked for the government as a USDA Dairy Product Grader. He later worked for Borden's Dairy in Plymouth for 37 years as a Quality Control Supervisor retiring in 1985.

He was a member of Salem United Church of Christ in Plymouth, a member of the Plymouth VFW World's Cheese Center Post # 5612. He was an avid golfer and sports fan always taking the opportunity to attend one of his children's and grandchildren's sporting events. He was a member of the Quit Qui Oc Men's Club, and in 1966 he was the Club Champion.

He is survived by nine children; **Cindy Weedman**, **Tom Weedman**, **Linda**

(Continued on page 6)

George W. Weedman was the grandfather of several subscribers and subjects of articles in the past.

If any subscribers are aware of the lineage of Jerry Weedman or his father, Victor Weedman, please advise the editor.

(Continued from page 5)

(Jeff) Krueger, Tim (Sherry Marquardt) Weedman, Mike (Renee) Weedman, Patty (David) Dellger, Susie (John) Ziegler, Lisa (Andrew) Peart, and Krissy Saunders, 26 grandchildren, 25 great grandchildren, one great great grandchild, a brother, Eugene (Kathleen) Weedman, and a sister, Helen Schisler. He was preceded in death by his wife, his parents, 6 brothers and sisters and a grandson-in-law, **Nathan.**

Funeral services were held on February 8, 2011 in Plymouth with burial in the Plymouth Woodlawn Cemetery.

George Weedman's lineage was: George Washington Weedman⁶. Grover Cleveland Weedman⁵, Allen Fleming Weedman⁴, Jonathan Weedman³, Jacob Weedman, Sr.², and Christian Weedman, Sr.¹.

Jerry Weedman

Jerry "Flash" Weedman, 70, of Mt. Zion, Illinois passed away on February 10, 2011 in the Decatur (IL) Memorial Hospital.

A service for Mr. Weedman was held on February 12, 2011 in Mt. Zion with burial in the Point Pleasant Cemetery in Long Creek, IL.

Jerry Weedman was born January 7, 1941 in Decatur, IL to **Victor** and **Bessie Jo Weedman**. He was raised by his step-father and mother, **Bill** and **Bessie Hector**. He married **Charlene Benton** on May 3, 1980. He owned and operated Weedman's Door and Hardware. He served from 1959 through 1962 in the U.S. Army in the 547th Engineering Battalion and was stationed in Germany. He obtained the rank of Specialist 4th Class. He was a member of the Carpenter Local #742. He was an avid outdoorsman and truly enjoyed fishing, hunting, and golf.

Surviving are his wife, **Charlene** of Mt. Zion; children, **Ken Weedman** and his wife **Cheryl**, **Cindy Stone** and her husband **Bill**, and **Lisa Kerin** and her husband **Michael**; grandchildren **Nicole Weedman, Jacob Weedman, Caelan Kerin** and **Michaela Kerin**; mother-in-law, **Martha Benton.**

His parents and step-father predeceased him.

Mr. Weedman's lineage is unclear and will be the subject of an inquiry for possible publication in the next issue.

Noreen Anna (Weber) Weedman

Noreen Weedman, age 94 of Sanborn, MN died on February 25, 2011, at St. John Lutheran Home in Springfield, MN

Noreen Anna Weedman was born on May 1, 1916 in Charleston Township, Redwood County, MN, the daughter of **Otto** and **Emelia (Kosel) Weber**. She attended

and graduated from Sanborn High School. She lived on the family farm in Charleston Township before moving to Stately



Township in 1941 and in 1946 she moved into Sanborn. Noreen was a member of Zion Lutheran Church in Sanborn, Zion Ladies Aid, and Sanborn Senior Citizens. Noreen enjoyed reading, volun-

(Continued on page 7)

(Continued from page 6)

teered for Senior Dining, and enjoyed watching her children and grandchildren in their sporting events. She especially enjoyed spending time with her grandchildren.

She is survived by her daughter - **Jan** and husband **Stuart Juhnke** of Sanborn; daughters-in-law - **Judy Weedman** of Springfield and **Marilyn Weedman** of Sanborn; 5 grandchildren; 11 great grandchildren; and many step-grandchildren and great-grandchildren. She was preceded in death by her parents; sons - **Gary Weedman** in 2008 and **Dennis Weedman** in 2009; and siblings **Ethel Trapp**, **Roy Weber**, **Lunetta Moody**, **Ruth Boelter**, and **Melvin Weber**.

The lineage of Noreen Weedman's husband, Clifford Donald Weedman was: Clifford Donald Weedman⁷, Loran Bruff Weedman⁶, Henry Linas Weedman⁵, Asa Weedman⁴, John Huhn Weedman, Sr.³, George Weedman², and Christian Weedman, Sr.¹.

Thomas Allen Weedman Johnny Michael Weedman

Brothers **Thomas Allen Weedman** and **Johnny Michael Weedman** died within four months of each other recently. **Thomas Allen Weedman**, a resident of Orlando FL born on October 26, 1953 died on November 28, 2010 in an Orlando hospital of an apparent heart attack. On March 4, 2011 **Johnny M. Weedman** died in Florida of liver cancer. He was born July 21, 1951 Both were buried in the family plot in the Mascotte Cemetery, Mascotte, Florida.

Johnny Michael Weedman attended the 2008 Weedman National Family Gathering in Uniontown, Pennsylvania along with his brother, **George Perry Weedman**.

Their lineage was: Johnny Michael Weedman and Thomas Allen Weedman⁸, Ralph Durward Weedman⁷, Lloyd Weedman⁶, George Perry Weedman⁵, Green Berry Weedman⁴, William Weedman³, Christian Weedman, Jr.² and Christian Weedman, Sr.¹.

Projects Update

Weedman Family DNA Project. One new family member is now having the DNA analysis to assist in trying to find our family origins. **Leon Weedman Myers**, from the line of **Stephen Weedman** and **Christian Weedman, Jr.** is now participating. While the project relies on direct male lines, advances in DNA technology may permit utilization of data generated by his participation.

Weedman Find-A-Grave Project. This is on a site not specific to our family but one that is valuable. The URL is www.findagrave.com and we have added more Weedman cemetery sites to our "virtual cemetery". In addition, we have located a number of tombstone photographs that have accumulated over the years and will be adding those as time permits. This site has prove highly useful in genealogical research and is growing rapidly.

If you have tombstone photographs and want to add them to the site, it is easily done. You may have to register but there is no cost involved. Alternately, if you send photographs to the editor (see address on page 2), we can upload for you.

Until next issue,

Nick Weedman
Editor

Two projects are active and are proving helpful in family research. The DNA project and the Find-A-Grave project are progressing well.

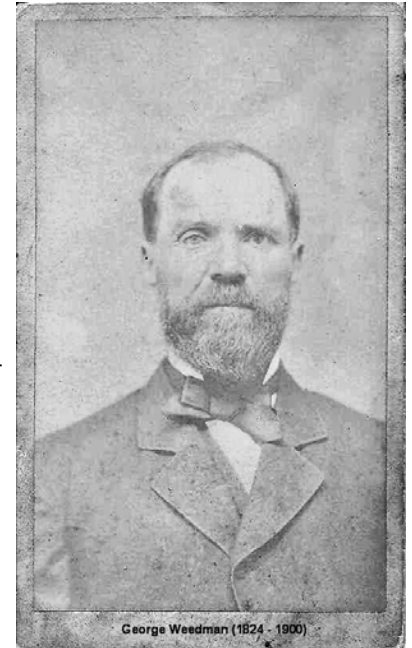
Some of the Descendants of the sons of George and Catherine (Danner) Weedman

*(Editor's note: Recently, we have been in contact with some of the descendants of the sons of **George and Catherine (Danner) Weedman**. George is a great grandson of **Christian and Elizabeth Weedman, Sr.** through their son, **George** and his son, **John Huhn Weedman, Sr.** All of the children of **George and Catherine Weedman** were born in DeWitt Co., Illinois but all four sons departed that area to live first in Kansas and then for a couple, in Colorado.*

*A recent e-mail contact provided information and photographs that we will share here. Earlier articles have appeared on the children of one of the sons, **Zadock Sinclair Weedman**. In the Spring 2010 issue on page 8, a photograph appears of four generations of the **Weedman/Romine** family and in the Winter 2008 issue on page 20 is an article about this family.)*

The youngest child born to **George and Catherine (Danner) Weedman** was **Abraham Lincoln Weedman** born 3 January 1865 in DeWitt County, IL. He was known as **Linc** or **Link**. On 8 March 1888, he married **Ida Bell Gilmore** in DeWitt County and had two daughters before moving to Kansas about 1900. In 1900, a daughter named **Ruby** was born while the family lived in Holyrood and subsequently the family moved to Harper County, KS. Whether he moved simultaneously with his brother, **Zadock Sinclair Weedman**, is not known but both ended up in southern Kansas. Initially, both lived in an area around Holyrood, Kansas but ultimately moved to either Sumner or Harper County, Kansas.

After moving to Harper County, three children were born: **Robert Beryl Weedman**, **Emerald Rose Weedman**, and a daughter, **Garnet Weedman**. One of the distinctive characteristics of the family is the pattern of naming some of their children after gemstones!



Ida Bell (Gilmore) Weedman (1870-1967)

We learned from **Jeanne Hefner** that about 1920, **Ida Bell Weedman** moved to Portland, Oregon along with her family although we found that **Abraham Lincoln Weedman** must have remained in Kansas. He died there in 1928 and is buried in Anthony, Harper County, Kansas.

It appears much of the family moved to Long Beach California. **Ida Bell Weedman** died in 1967 and is buried there.

We have been contacted recently by **Yoshi Nakamoto**, a grandson of **Yae Nakamoto** who married **Emerald Rose Weedman**. **Emerald** was either employed or stationed on Okinawa and married **Yae** there. A photograph of **Emerald** was sent by **Yoshi** but we couldn't improve the quality sufficiently to use here.

We appreciate the contact, terrific photographs and information sent by **Jeanne Hefner** and **Yoshi Nakamoto**.

We will attempt to put all of the photographs on our web site on a page dedicated to the sons of **George and Catherine (Danner) Weedman**.