

---

---

# ❖ Weedman Newsletter ❖

---

---

Volume 45 Issue 1

Spring 2012

---

---

---

The *Weedman Newsletter* is beginning its 45th year of continuous publication. The first publishers were Paul and Marianne Montgomery.

---

As with the last edition of the *Weedman Newsletter*, this one is also late by a couple of weeks. But that is a significant improvement from the last one!

Responses to our plea for help in publishing the Newsletter were a bit underwhelming! We received several cards and monetary donations all of which are highly appreciated. So far we have had only two people to step forward to offer to write the occasional article for this publication. Whether we continue past this current year will depend on a number of factors one of which is our ability to attract contributing authors.

Please give some consideration and possibly offer to write an article on your particular family.

---

## Recent Contacts

Recent contacts have provided some new information on their families while others have made a commitment to do so. Included in those recently corresponding are:

- **Carey Weedman Wehrli** – interested in the family of **Harry Raphael Weedman**, son of **Elisha** and **Letitia (Jarboe) Weedman** who went to the Pacific Northwest from Arkansas;
- **Chevon Stockwell** is interested in the family of **Cyril Clyde Weedman** who sent to Arizona from Southeast Missouri and whose line if through **Daniel** and **Nancy (Spurrier) Weedman**;
- **Gail Courtney** whose father

was **Myron Weedman** who died in World War II and whose line traces back to **George** and **Charlotte (Huhn) Weedman** of Illinois; and

- **Geraldine Weedman** furnished information on the family of **William Walter Weedman** of the Swedish Weedman line that descends from **Olaf Weedman**.

Several have furnished new family information which is highly appreciated.

---

## 1940 Census

The long awaited release to the public of the 1940 Federal Census was done in early April and several organizations such as Ancestry.com and Family Search.com are frantically working to index the 130 million entries. Until an index is available, laborious searches are needed to locate a family or individual in the census. I found my family (this is the first census in which I am listed) and while I learned little, it was interesting to see the entry. I found my paternal grandparents listed and although I know when there were born, it was a bit of

*(Continued on page 2)*

---

## Inside This Issue

Recent Contacts	1
Theiss Book & County Histories	2
Family Names in the News	3
William Melvin Weedman Family	4~7
2012 Reunion	8

---

(Continued from page 1)

a shock to see them in their mid-70s in 1940.

As the index becomes more widely available, we will be inputting selected information into our family data base.

### Theiss Book and County Histories

In recent years, some attempt has been made to digitalize books that are out of copyright protection. Google made a major effort in this regard but apparently has backed off most of their efforts. Other firms have done the same.

As a result of their efforts, we have learned that a number of county history books published in the 1880s are available in some web sites. We have downloaded and have available county histories for the following counties and will add others as we discover their avail-

ability:

- **Perry County, Ohio**
- **Licking County, Ohio**
- **Fairfield County, Ohio**
- **Perry County, Indiana**
- **McLean County, Illinois**
- **DeWitt County, Illinois**
- **Piatt County, Illinois**

We have taken the Adobe Acrobat file for these counties and have processed them so they are easily searchable if you have the free software, Adobe Acrobat Reader. We have attempted to insure there are no licensing violations but all of these appear to either never have been in copyright or if they were, the copyright is no longer valid.

For those wishing a copy of Gena Theiss book, *Christian Weedman, Sr. and His Descendants 1735-1982* we can include any or all of the books on the CD that you order. In addition, we can include all 44 volumes of the *Weedman Newsletter*

(Continued on page 3)

The late Gena Theiss published two books on the descendants of Christian Weedman, Sr.

## About the Weedman Newsletter

The *Weedman Newsletter* is a quarterly family publication with emphasis on the genealogy of the Weedman and allied families. It is distributed to interested family members, selected genealogical societies and libraries. Circulation is 120.

The *Newsletter* is edited, published and distributed by **Nick Weedman**. All address changes, new subscriptions, etc. should be sent to him.

Articles for publication in the Newsletter are highly welcomed. They must have some relevance to the family and those with a genealogical flavor are of particular interest.

Editor and Publisher: **Nick Weedman**  
130 Berry Creek Drive  
Flat Rock NC 28731-8531  
E-mail address: [nick@weedman.org](mailto:nick@weedman.org)

Visit the Weedman Web-page at: <http://www.weedman.org>.

Queries regarding the Weedman family or allied lines are welcomed. Attention will be given to each and for those which cannot be answered by family genealogists, publication in the *Newsletter* will be made.

The *Weedman Newsletter* is a registered publication (ISSN 0883-7791).

(Continued from page 2)

which also is fully searchable.

The cost of the CD is \$5.00 which covers postage and materials. To order, send a check to Nick Weedman, 130 Berry Creek Drive, Flat Rock, NC 28731 and specify which materials you want.

Family members with an interest in genealogy and family history are eligible to purchase a copy of the CD. In addition, we will ultimately make copies available to libraries and genealogical research organizations.

---

Obituary

### **Bette J. Weedman**

**Bette J. Weedman**, 82, of Rock Falls, IL died Wednesday, April 4, 2012, at Heartland Health Care Center in Macomb, IL. Bette was born Sept. 18, 1929, in Colorado Springs, Colo., the daughter of **Bert and Edith (Henson) Cornstubble**. She married Robert H. Weedman on July 9, 1947, in Effingham, IL.

Surviving are her husband; two sons, **Robert E. (Anne) Weedman** of Houston and **William (Shala) Weedman** of Macomb; a brother, **Bert (Alice) Cornstubble** of Rock Falls; six grandchildren; and three great-grandchildren.

She was preceded in death by her parents and two brothers. Cremation rites have been accorded.

---

### **Family Names in the News**

**Chelsea Weedman**, daughter of **Paul and Emily Weedman** of Poway, CA continues to do extremely well as a sophomore in the Penn State University swim team. She recently competed in the NCAA championships in Auburn AL and had a just under personal best time in the 200 meter butterfly event. Her sister,

**Ashley Weedman**, will be swimming for California Baptist University as a freshman this fall.

**Brent Forrest Weedman** continues to make the news in the Mixed Martial Arts world. He has an excellent record and just won his most recent fight in the Bel-lator circuit. He is the son of **William George Weedman III** and **Margaret Weedman** of Louisville, KY. He is associated with the Team Haycraft group out of Louisville.

**Andrew Weedman**, a senior at South Elgin, IL High School has been making the news for some excellent performance as a baseball player for that school. In a recent game, the first base player hit two home runs, one of which was a grand slam! You can find his recruiting videos on a number of web sites. He is the son of **Andrew W.** and **Carol Weedman**.

**Jeff Weedman**, Vice President of Global Business Development for Procter and Gamble in Cincinnati, Ohio continues to make the news as he represents the company in a number of negotiations and public appearances. He is from Anderson, Indiana and attended Albion College and later received his MBA from the University of Michigan.

He was recently in the news leading P&G in working with Universities to spur innovation. He was also a speaker at a National Governor's Conference in Washington, D. C.

His name is often seen in business news items. He is the son of **Dwight** and **Juanita Weedman** of Anderson.

---

*Family names in the news are sourced from a Google service called Google Alerts which finds key words from thousands of publications.*

---

## William Melvin Weedman

Lost Son of **John Huhn Weedman, Senior** is Found!

*We are deeply indebted to **Nadine Rexroot** of Enid Oklahoma for furnishing photographs and obituary clippings of the **William Melvin Weedman** family. She and her husband gave support to the Weedman family and, in particular, to **Pearl Weedman** in the latter years of her life.*

**John Huhn Weedman, Sr.** was a son of George and **Charlotte (Huhn) Weedman** and was a grandson of the original immigrant, **Christian Weedman, Sr.** and his wife **Elizabeth**. John married **Rachael Wilson** in Perry County, Ohio and their large family has many descendants today living all around the country.

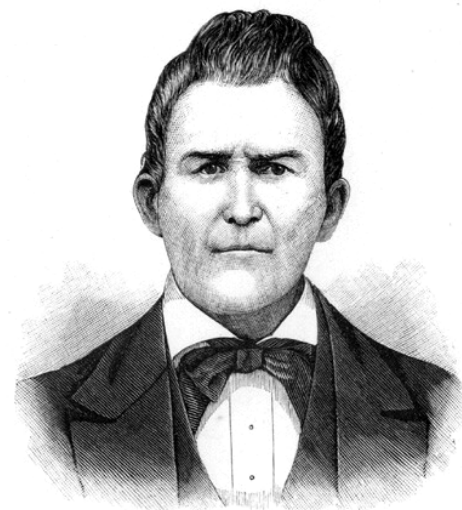
In order to provide some background on **John Weedman, Senior** we will reprint his biographical sketch from the 1882 History of DeWitt County, Illinois. When this was published, John had been dead for some time and obviously some of his children or grandchildren provided information for the article.

But, there is some important information that is omitted and that is the fact that **John Weedman, Sr.** married **Mrs. Minerva (Yazel) Gamble** in the late 1850s and the couple had a son, **William Melvin Weedman**. We can only speculate but it appears on the surface that at least some of the family did not take kindly to the second marriage.

Here is the biographical sketch:

### *John Huhn Weedman, Senior*

*The Weedman's were among the finest settlers Central Illinois, and of the few pioneers who settled in this county a half century ago. They are of German ancestry on the paternal side, and English on the maternal. George Weedman, the grandfather of the present Weedman family, was a native of Pennsylvania. He emigrated to Ohio soon after that State was admitted into the Union, and there remained until 1830, when he brought his family, to Illinois and settled in Randolph's Grove in McLean county, where he lived until his death, which occurred at an advanced age. John Weedman, his son, was born in Pennsylvania, in 1790, and was yet a youth when his parents removed to Ohio. He there grew to manhood, and married. When his father came west, he accompanied him and settled at the place above named in McLean County. In 1835 he removed to Hurley's Grove, in what is now known as Santa Anna Township, and there lived until his death. In his life, Mr. Weedman belonged to the ambitious and progressive class of men, and was actuated by a laudable desire to excel in whatever he undertook. He was by occupation a farmer and stock-raiser, and in that business accumulated considerable property, at least sufficient to render him comfortable in his declining years. Both he and his wife were members of the M. E. church, and both took an active interest in that Christian organization. He married Rachel Wilson, who was a native of Maryland, but was a resident of Ohio at the time of her marriage. Her father, Asa Wilson, was one of the early settlers of that State.*



JOHN WEEDMAN, SR. (DECEASED.)

(Continued on page 5)

*(Continued from page 4)*

*By the union of John and Rachel Weedman there were ten children, seven sons and three daughters. Isaiah, the fifth son, with patriotic devotion to his country enlisted during the late war in the 2d Illinois Cavalry, and lost his life at the battle of Holly Springs, December 20th, 1862. The names of the other children in the order of their birth are Asa, who died leaving a family, and who is mentioned in a separate biography; Harriet, George, Amos, John, Isaiah (deceased), Lucinda (also deceased), Eliza Emma, Zadok Casey, and Thomas St. Clair. All of the sons who are living are active, business men, and among the leading agriculturists of the county. It may be said of Mr. Weedman, Sr., that in his life every act of his, whether in public or private, was actuated by a desire to do right. He was honorable in everything, and was never known to do that which brought the blush of shame to his cheek, or in the least reflected upon his character as an honest man and a Christian gentleman.*

Also omitted from the biographical sketch was the fact that **John** and **Minerva Weedman** moved to Hamilton County, Iowa in the 1850s and that is where John died 12 March 1868. We believe there were other biographical sketches that mention the second marriage as well as the son of that marriage but we are unable to access that article at this time.

Following John's death in Iowa, **Minerva** and **William Melvin Weedman** returned to live in DeWitt County, Illinois.

### **Minerva Yazel**

Minerva was born in Ohio in September 1825 to Mr (Given Name Unknown) and **Sarah Yazel**.

On 13 July 1845, she married **Jefferson F. Gamble** in McLean Co. IL and a son, **James J. Gamble**, was born in 1846 to the couple. By 1850, Mr. Gamble has apparently died and Minerva with James Gamble was living in Bloomington, McLean Co., IL with her mother, **Sarah Yazel**.

On 3 Jun 1855, **Minerva Gamble** married **John Huhn Weedman, Sr.** in a second marriage for both. John's first wife, Rachael (Wilson) Weedman has died in March 1854. At some point, the couple moved to Hamilton Co., Iowa and that is apparently where a son, **William Melvin Weedman**, was born on 20 February 1859. We are unable to locate the family in the 1860 census.

**John H. Weedman, Sr.** died on 12 March 1868 in Hamilton Co., IA and his body was returned to DeWitt Co., IL for burial in the Campground Cemetery. Following the death of **John H. Weedman**, his widow and son returned to DeWitt County to live.

In the 1870 census, **Minerva Weedman** is shown living in Farmer City, IL (age 42) along with son, **Melvin Weedman**, who appears as a 15 year old who works as a teamster. His age appears to be in error.

On 15 September 1870, **Minerva Weedman** married **Major John B. Hicks** and the family lived in Monticello, Piatt Co., IL. The family is listed in the 1880 census with two of Mr. Hicks grandchildren living with the family. Major Hicks was a veteran of the Civil War and operated a brick manufacturing company in Monticello.

In the 1900 census, **Minerva Hicks** (age 74) was living in Monticello along with her first son, **James J. Gamble** and his wife, **Eva**. The couple apparently had no children.

Minerva died after the 1900 census was taken and prior to the 1910 census. No grave site for Minerva, **Jefferson Gamble** or **John B. Hicks** has been found.

For some period of time, attempts to follow the path of **Melvin Weedman** had failed. He seemed to have simply van-

*(Continued on page 6)*

(Continued from page 5)

ished but with the advent of the Find A Grave website, we located his burial place in Oklahoma. Further research revealed that the obituary of **Mr. Kenneth Rexroot** stated that he and his wife had provided care of some type for **Pearl Weedman**. Contact was made by mail with Mrs. Rexroot and she provided the pictures and obituaries that follow in this article.

## William Melvin Weedman

**William Melvin Weedman** was born on 20 February 1859 probably in Hamilton Co., Iowa. The family lived in Iowa until the death of **John H. Weedman, Sr.** in 1868 after which they relocated back to DeWitt County, Illinois.

In the 1870 census as stated above William and Minerva were living in Farmer City but shortly after the census was taken, Minerva married **John B. Hicks**.

In 1880, Melvin was living with a half brother, **Zadock Casey Weedman**, and his family in Farmer City. He is listed as a farmer.

At some point, Melvin left Illinois and appears in Scott City, Kansas where he married **Sophia Haak**. His obituary shown here is revealing about his journey from his initial residence in Scott City, Kansas to his permanent home in Oklahoma.

Why he moved to Kansas and ultimately Oklahoma is unknown. However, a number of his Weedman cousins located in Central and ultimately Southern Kansas and perhaps they had influence on his decision to leave Illinois. And, there were land rushes where settlers could take up land in Oklahoma presumably for little or no cost and one of those occurred just prior to the family moving to that state. A land map shows that both Mel and Sophia had land in Oklahoma and from the obituary on **Eva Weedman**, it appears they accumulated additional land during their life time.

**Mel Weedman** was a farmer and/or a rancher and lived near Aline, Oklahoma. He died on 6 December 1935 and is buried in the Square Cedar Cemetery in Cleo Springs, Oklahoma.

## Sophia Haak

**Sophia Haak** was born 1 November 1855 in LaSalle Co., IL. The names of her parents are not known at this point. In 1885, she moved to Kansas probably in the company of one or more of her siblings. Shortly after her move, she married **William Melvin Weedman**.

Her death at age 60 seems early by today's standards. Research into the lives of her siblings indicates that virtually all lived longer than Sophia. We have been able to locate the grave sites of most of the siblings. Her death occurred on 12 April 1915 and she is buried in the Square Cedar Cemetery in Cleo Springs, OK.

She and Mel had three children: Bertha, who died in infancy, **Eva Tot Weedman**, and **Pearl Dot Weedman**. Her obituary is shown on the following page.

### OBITUARY

William Melvin Weedman was born February the 20th, 1859, at Farmer City, ILL., and departed this life Dec., 6th, 1935, at the age of 76 years, 9 months and 16 days.

He was married to Sophia Hank, in May 1890, at Scott City, Kansas. To this union were born three children, Bertha, who died in infancy; Mrs. Eva Church and Pearl of the home community.

He lived in Kansas, until he came to Oklahoma, in 1896, where he lived until the end.

His life was industrious and upright and he was well liked by those who knew him. He expressed faith in God and thought of a future life.

He leaves to mourn his departure two daughters and a host of relatives and friends.

### CARD OF THANKS

We wish to express our sincere appreciation for the tender and constant care and sincere sympathy so tenderly expressed during the illness and death of our loved one.

—The daughters and  
—Other relatives.

(Continued on page 7)

(Continued from page 6)

## Eva Tot Weedman

**Eva Tot Weedman** was born near Cheney, Kansas on 14 March 1893. She was two years old when the family moved to establish a new home near Aline, Oklahoma.

On 5 November 1927 she married **Joel Dale Church** in Garfield County, Oklahoma. Mr. Church was a widower with several children when this couple married. Apparently, the marriage didn't last long. In the 1930 census, Eva is living with her father and sister and is shown as a married person. We suspect there was a divorce not long after the census was

taken and there were no children born to this marriage. **Eva Weedman** died on 17 January 1948 at the age of 54 and is buried in the Square Cedar Cemetery in Cleo Springs, OK where the rest of the family is buried.

### OBITUARY

#### Miss Eva Weedman

Eva Tot Weedman, daughter of Mr. and Mrs. Melvin Woodman was born near Cheney, Kansas, March 14, 1893. When two years of age, she moved with her parents to a farm near Aline, Oklahoma, where she resided the remainder of her life.

Eva's girlhood days were spent much the same as that of the average country girl in sharing the duties and blessings of the home and in attending the Englewood school. She possessed an amiable and jolly disposition which won her a wide circle of friends.

In 1914 a great sorrow came into the Weedman home when Mrs. Weedman, the mother was taken. Eva and her sister, Pearl, assumed the responsibilities of the home and kept house for their father until his death in 1935. After his passing the girls continued to reside on and operate the farm and were able by hard work and good management to accumulate other land.

As a neighbor, Eva was unsurpassed. Possessing a sympathetic disposition, there was no service too difficult or menial she would not render to help a friend in sickness or need.

She had been in failing health for several years but not until about ten weeks ago did her con-

dition become serious. She was then taken to an Enid hospital for treatment. As a sufferer her endurance and patience were remarkable.

Nearly thirty-five years ago Eva was baptised in the Christian faith. However, during the last weeks of her illness she sought God more perfectly in His peace and pardon and gave clear testimony on numerous occasions that Christ was real to her soul. She enjoyed the reading of the scriptures and the seasons of prayer in her room and loved to talk about heaven with its beauty and bliss, where she expected soon to depart.

She passed away on Saturday, January 17, 1948 at the age of 54 years, 10 months and three days.

Having made her preparation to meet God, she approached her grave "like one who wraps the drapery of her couch about her and lies down to pleasant dreams."

She leaves to mourn her passing, one sister, Pearl, of the home; two aunts, several cousins and a host of friends.

Two daughters of **Zadock Sinclair Weedman** married brothers **Philip** and **Max Church** in Kansas. However, we can find no relation between that Church family and the family of **Joel Dale Church**.

## Pearl Dot Weedman

**Pearl Dot Weedman** was the youngest of three children and was born in Kansas in 1896. She never married and when her mother died in 1915 assumed the role of homemaker along with her sister. Pearl died 21 January 1967 in Aline, Oklahoma and is buried in the Square Cedar Cemetery.

### OBITUARY

Mrs. Wm. Weedman, born Nov. 1, 1855, departed her life April 12, 1915. She was born of Christian parentage and in this faith she died. She was born in LaSalle county, Ill.

She was of a family of six children, and is survived by three sisters and two brothers: John Haak, Clearwater, Kan., Mrs. Mary Corle, Algona, Iowa, Mrs. Hanna Orr, Scott City, Kan., Mrs. R. E. Brown, Algona, Iowa, and Will Haak, Browning, Neb.

She moved to Kansas in 1885 and was united in marriage to Wm. Weedman, in Scott City, Kan., on May 27, 1889. To this union three children were born one of whom died in infancy, two daughters being left with their father to mourn her loss. She was a devoted wife and loving mother, loved by all who knew her. Everything was done that loving hands could do to prolong her life, but the end came after a long and painful illness, but it came in a peaceful sleep.

Her sister, Mrs. R. E. Brown came from Algona, Iowa, to spend a few days with her, but came too late, she having passed away on Monday and her sister came on Friday.

### Gard of Thanks

Our heartfelt thanks are hereby tendered to our friends and neighbors all who came to us with kindly words of sympathy in our late bereavement by the death of our wife and mother. You will never know how helpful you were to us until you receive like attention under like circumstances. Verily, we had the bitter cup of sorrow and bereavement to drink, but you helped us,

WM. WEEDMAN and Daughters.



Melvin and Sophia (Haak) Weedman with daughters Pearl and Eva

With the passing of **Pearl Weedman** the line of **William Melvin Weedman** ended.

## **2012 Weedman National Family Gathering**

**August 17 ~ 19, 2012**

### **Rough River State Park Kentucky**

Hosts: **Cliff and Shirley Weedman along with Myron and Sherry Weedman**

Details of the Reunion are currently being considered but among the possible events are:

- **touring five local graveyards where family members are buried**
- **fishing,**
- **camping,**
- **swimming,**
- **Blue Grass music,**
- **hayrides, and yard games**
- **Sunday Service.**

Mark your calendars for these dates and check the Weedman website ([www.weedman.org](http://www.weedman.org)) for additional details as they are released! Or send an e-mail to Cliff at [weed88@yahoo.com](mailto:weed88@yahoo.com).

#### **Weedman Newsletter**

130 Berry Creek Drive  
Flat Rock, NC 28731-8531



---

---

# ❖ Weedman Newsletter ❖

---

---

Volume 45 Issue 2

Summer 2012

---

---

---

*The 2012 Weedman National Family Gathering is the 14th in a series of meetings that started in 1980. This will be the second one at the Rough River State Park.*

---

## 2012 Weedman Family Reunion

The **2012 Weedman Family Reunion** or **National Family Gathering** will be held from Friday, August 17 through Sunday August 19 at the Rough River State Park in Grayson County, Kentucky. Hosts of the event are **Cliff and Shirley Weedman** along with **Myron and Sherry Weedman**.

Grayson County, Kentucky is where **Christian and Mary (Marshall) Weedman** settled when the area was still part of Virginia. They received a land grant for land on Clifty Creek and lived there until their apparent deaths in the 1830s. So, this is a very significant historic area for many of the Weedman family.

More details are shown on page 16 of this issue and even more will be sent as they become available.

A block of rooms/cabins has been reserved at the Rough River State Park. For special rates to apply, reservations must be made on or before July 31, 2012. To reserve your room or cabin, call 1-800-325-1713.

---

## Hall of Fame Nominations Sought

If we can secure nominations, we will be presenting new inductees into the **Weedman Family Hall of Fame** at the **2012 Weedman National Family Gathering**.

The Hall of Fame is a mechanism to bring recognition to family members who have brought a sense of pride or notable accomplishment to the family. Given the time constraints, a simple nomination with some limited amount of justification will be all that is needed. We will work with the nominating party to create a biographical sketch showing the nominees achievements and family lineage.

The nominee need not have Weedman lineage but could be a person who married into the Weedman family. An example of this is **Dee Brown**, author and historian who wrote **Bury My Heart At Wounded Knee**. Brown married into the family but his accomplishments were deemed worthy of recognition and thus he was inducted into the Hall of Fame.

Contact Nick Weedman, Editor of the Newsletter, at the addresses shown on the next page of this issue to nominate someone. It would be helpful to have names in place about **August 1** to have sufficient time to research and prepare presentation materials

*(Continued on page 10)*

---

## Inside This Issue

<b>2012 Weedman Reunion</b>	<b>9</b>
<b>Obituaries</b>	<b>11</b>
<b>Names in the News</b>	<b>12</b>
<b>Widmann Surname Origins</b>	<b>13</b>
<b>Widmann Family Distribution</b>	<b>15</b>
<b>2012 Reunion Details</b>	<b>16</b>

---

(Continued from page 9)

### Recent Contacts

**Diane Kennedy** wrote to advise us of the death of her **Aunt Mary Alice Weedman Fults**. She had Alzheimer's Disease and passed away April 7, 2012. Diane advised that she has information and photographs on a public family tree on Ancestry.com. The tree is called the **Kennedy/Jamison/Weedman/Beard** Family Tree. We believe access to this is free but have not verified the cost. We did access the site and it does have a lot of information on it.

**Richard Widmann** of New York City has contributed articles regarding some of the **Widmann** family history as well as the distribution of where **Widmann** families currently live in Germany. We are of the belief that our origins are German and that the surname was originally **Widmann**. Now if we could only prove this!

**Taffy Walker** of Ventura, CA wrote to

seek information on her great grandmother, **Bertha May Weedman**, daughter of **Elisha Franklin Weedman** and his first wife, **Eliza Massey**. Eliza died when **Bertha May** was two years old and she was at least partially raised by her grandmother, **Mary Jane Craig Weedman**. **Bertha May** was the only child of this couple (**Elisha Franklin Weedman** did marry **Vernetta (Nettie) Perkins** and the couple had several children). Bertha married **Thomas Thurston Walker** and the family lived in southwestern North Dakota for a number of years. A divorce occurred and Bertha moved to Portland, Oregon where she died in 1966.

**Chester Roistacher** has continued to provide some excellent information on the family of **James Edwin Weedman**, the subject of the Featured Family in the Fall 2011 issue of the Weedman Newsletter. Numerous pictures and much supplemental information have been provided and is much appreciated.

(Continued on page 11)

*We continue to receive some excellent family information as well as inquiries from families seeking ancestral ties.*

## About the Weedman Newsletter

The *Weedman Newsletter* is a quarterly family publication with emphasis on the genealogy of the Weedman and allied families. It is distributed to interested family members, selected genealogical societies and libraries. Circulation is 120 total for both the printed and electronic versions..

The *Newsletter* is edited, published and distributed by **Nick Weedman**. All address changes, new subscriptions, etc. should be sent to him.

Articles for publication in the Newsletter are highly welcomed. They must have some relevance to the family and those with a genealogical flavor are of particular interest.

Editor and Publisher: **Nick Weedman**  
130 Berry Creek Drive  
Flat Rock NC 28731-8531  
E-mail address: [nick@weedman.org](mailto:nick@weedman.org)

Visit the Weedman Web-page at: <http://www.weedman.org>.

Queries regarding the Weedman family or allied lines are welcomed. Attention will be given to each and for those which cannot be answered by family genealogists, publication in the *Newsletter* will be made.

The *Weedman Newsletter* is a registered publication (ISSN 0883-7791).

*(Continued from page 10)*

In addition, we have received a number of inquires about **Weedman** family history and ancestry.

#### *Obituaries*

### **Mary Alice Weedman Fults**

**Mary Alice Fults**, 90, of Indianapolis, died April 7, 2012. She was born February 7, 1922 in Bristow, IN, to the late **Oscar** and **Hettie Beard Weedman**. Mary was a homemaker who loved her garden and flowers. She was a member of the North Liberty Christian Church, Order of Eastern Star and a life member of the Alpha Alpha Eta Sorority.

She is survived by step-son, **Edward (Janet) Fults**; step-daughter, **Phyllis Fults**; brother, **Carl Weedman**; 2 granddaughters; 1 grandson; 5 great-grandchildren and many nieces and nephews. She was also preceded in death by her husband, **Edward Fults**.

Funeral services were on April 11<sup>th</sup> with burial in the Bethel United Methodist Cemetery in Indianapolis.

*Her line was: Mary Alice Weedman<sup>7</sup>, Oscar David<sup>6</sup>, William T.<sup>5</sup>, George Glasscock<sup>4</sup>, Daniel<sup>3</sup>, Christian, Jr.<sup>2</sup>, and Christian, Senior<sup>1</sup>.*

### **Betty A. (Duy) Weedman**

Betty A. Weedman, of Aurora IL passed away May 7, 2012 at home surrounded by her loving family. Betty was born October 14, 1942 in Aurora, IL to the late **Carl** and **Ruth Duy**. She was the wife of **David Weedman** for 51 years; loving mother of **Scott (Tina) Weedman** and **Brian (Karen) Weedman**; cherished grandmother of **Lindsay** and **Andrew**. Betty was a member of Our Savior Lutheran Church in Aurora, IL. Services

were on May 12, 2012 with burial in Lincoln Memorial Park Cemetery.

*The lineage of her husband, David Weedman, is: David Lee Weedman<sup>8</sup>, Clarence Harold<sup>7</sup>, Albert Farlow<sup>6</sup>, Charles Newton<sup>5</sup>, Asa<sup>4</sup>, John Huhn, Sr.<sup>3</sup>, George<sup>2</sup>, Christian, Sr.<sup>1</sup>.*

### **Edgar George Weedman, Jr.**

**Edgar George Weedman, Jr.**, 55 of Hickory NC died on April 30, 2012. No further details are known. It appears he descends from Weedman families with roots in Breckinridge, KY.

### **Jean Marie (Lenz) Weedman**

Jean Marie Lenz) Weedman, 82 of Bonney Lake WA, passed away on March 16, 2012 in Puyallup WA. Committal services were held on March 31, 2012 BONNEY WATSON Washington Memorial Park, Seatac WA.

Her Weedman connection lineage is unclear at this time.

### **Ralph Cornelius Weedman, Jr.**

**Ralph Cornelius Weedman, Jr.** 56, passed away on June 3, 2012.

He proudly served 12 years in the Navy aboard the USS Sunfish SSN 649 and the USS Flasher SSN 613.

He was preceded in death by his parents, **Ralph** and **Beverly Weedman**; and his sister, **Debbie Bruner**.

Survivors include his daughters, **Lila Asanion (Chris)**, **Denice Weedman** and **Melanie Weedman**; grandchildren, **Hayden** and **Kaleb Asanion**, **Mela Weedman** and **Willow Miller**; his

*(Continued on page 12)*

*If you have knowledge of the deaths of family members, please notify the editor as shown on page 10.*

We receive news about family members featured in Names in the News from a Google program that finds our surname on the Internet.

(Continued from page 11)

brother, **Mike Weedman (Robin)**; sisters, **Sheila Hays** and **Patty Thomas**; and many caring and loving nieces and nephews. Memorial services were held on July 5, 2012 at the Kentucky [Veterans](#) Cemetery Central, Radcliff, KY.

*His lineage: Ralph Cornelius Weedman, Jr.<sup>8</sup>, Ralph Cornelius, Sr.<sup>7</sup>, William George<sup>6</sup>, Samuel Elisha<sup>5</sup>, George Glasscock<sup>4</sup>, Daniel<sup>3</sup>, Christian, Jr.<sup>2</sup>, Christian Sr.<sup>1</sup>.*

### **Sunny (Warren) Weedman**

**Sunny (Warren) Weedman**, 81, of Evansville Indiana passed away at 7 pm, Monday, March 19, 2012.

Sunny was born June 23, 1930 in Wadesville, Indiana the daughter of **Rufus** and **Lincoyah (Bell) Warren**. She was a graduate of Central High School and Deaconess School of Nursing. Sunny was a member of Seventh Day Adventist Church and a member of River City Clowns. She had worked as Director of Nursing at Bethel Manor for 33 years. Her Weedman connection lineage is unclear at this time.

### **Kimberly Diane Weedman**

Kimberly Diane Weedman, born 4 May 1964 died 15 December 2011 in San Diego, CA. She succumbed to cancer.

*Her lineage: Kinberly Diane Weedman<sup>8</sup>, Clifford William, Jr.<sup>7</sup>, Clifford William, St.<sup>6</sup>, Andrew Garfield<sup>5</sup>, Jesse Hamilton Stewart<sup>4</sup>, David<sup>3</sup>, Jacob<sup>2</sup>, Christian, Sr.<sup>1</sup>.*

### **Names in the News**

**Shane Weedman**, a 2011 Tell City (IN) graduate, pitched a no-hitter for the Owensboro (KY) Oilers in a 3-0 win over Marion in the Ohio Valley Summer Collegiate Baseball League on June 26, 2012.

Weedman struck out nine and walked four as he raised his record to 2-1 in the wooden-bat league. He has a 3.15 earned run average and has struck out 27 and walked 18 in 20 innings. It was the first no-hitter in the seven-year history of the Oilers.

Weedman also threw a no-hitter for Tell City as a junior against South Central April 8, 2010.

He pitched for Vincennes University this spring, mostly as a reliever. He appeared in 13 games, pitching 28 innings and going 1-3 with a 6.75 earned run average. He struck out 23 and walked 23.

He is a 2011 graduate of Tell City High School and is now a sophomore at Vincennes University. He is the son of **Jim** and **Robin Weedman**.

**Jeff Weedman**, currently Vice President Global Business Development for Procter & Gamble has been named to head an effort in Cincinnati to foster new business and promote entrepreneurship in that City. The assignment is for two years after which the loaned executive will presumably return to a role in P&G. The new effort is called Cintrifuse. Congratulations on the new assignment and we wish you success in the endeavor. Following is a biographical sketch found on the internet for Jeff.



*Jeff Weedman has been responsible for P&G's External Business Development organization since its inception in 1996.*

*Mr. Weedman launched an entrepreneur-*

*(Continued on page 13)*

*(Continued from page 12)*

*rial licensing department charged with the commercialization of P&G's treasure trove of patents, trademarks, and know-how. Now transformed into a robust External Business Development organization, the group has a broad mission to create value through intellectual property management, including enabling "Connect + Develop"—P&G's open innovation strategy that looks to access external technologies, "cooked products," capabilities and business propositions. In addition to Mr. Weedman's long and diverse career at Procter & Gamble, he serves as an observing Board Member to P&G's and Clorox's Glad Products joint venture, has served as an observing Board Member with yet2.com, and is currently on the board of Northern Kentucky University's Research Foundation.*

### **Widmann Surname Origins**

Contributed by Robert Widmann

The work of Cologne University **Professor Walter Pfeilsticker** needs to be taken into account on this subject. The surname **Widmann** arose, Pfeilsticker claimed, when a certain **Mangolt** of Dagersheim, Wuerttemberg was awarded the town Widdemhof, a barn/stable structure, as a fief circa 1300. Mangolt was appointed mayor of Dagersheim and as one who controlled or managed the income from the **Widdemhof**, became known as **Widdemeyer** or **Widdman**.

The Dagersheim Widdemhof may still stand and may be viewed on the Internet at [Zeitriese-bb.de/dagers/zehnt.htm](http://Zeitriese-bb.de/dagers/zehnt.htm) The term "widdemhof" referred originally to a structure where male animals were kept segregated or reserved in order to manage flock or herd size and there is further thought that the root of the term - wid - refers back to the sense of the ram (Widder) as a repeating force/activity as

do many other words in the German language having a wid component (wider - contra, against; widerhall - echo, etc.). The term "Widmen" means dedication deriving perhaps from a sense of a perpetual return to an object, activity or frame of mind.

In Wuerttemberg of the middle ages, the term Widdemhof had come to mean a farm or farm structures reserved for church use, usually to provide income and support for the church and its pastor. However, in Dagersheim as in many other towns in Wuerttemberg, the Widdemhof referred specifically to a structure used as a place for villagers and for farmers nearby to deposit church tithe (zehntscheuer) obligations: so many measures of wheat, of barley, of hay, etc. But as church pastors became political appointees, the income stream of the tithe barn, the Widdemhof, was often diverted to other village "patriziat" ranked higher than pastor by the king or warlord of the region who made such appointments. This state of affairs and other similar abuses was to lead in 1525 to the Peasants War, wherein peasant leaders demanded, among other things, a right to choose Church Pastors, and as noted by Frederick Engels, the red flag was to fly for the first time.

But it was this Widdemhof in Dagersheim that was awarded by **Count Eberhard**, Erlauch, to a certain village mayor named Mangolt as a fief, an income property, that was to be associated with Mangolt's name, first as **Widdemaier** and then as **Widdemann** and that became associated as a surname with his offspring and descendants over the centuries.

**Professor Pfeilsticker** further claims **Mangolt Widdemann** was an illegitimate son of **Count Eberhard** and a ser-

*(Continued on page 14)*

*Robert Widmann has been a consistent contributor to the Weedman Newsletters. Two articles submitted by him are featured here.*

*(Continued from page 13)*

vant girl. As proof of this he points to the title deed of fief coming from the House of Wurttemberg to Mangolt of Dagersheim. Perhaps this account has truth to it as, over the years, members of the **Widmann Clan** turn up as officially favored local leaders: in Ehningen (1525), **Hans Widmann** presumptive grandfather of **Lienhard** (1606) is Aidlingen Village Shultheiss, **Claus Widmann** in Gueltlingen, **Konrad** and **Mangold** in Marbach and Steinheim (from which **George von Widmann** of Eger and the **Widmann-Sedlitzky** family was thought to emerge).

Below - purported origin of name, "**Weidmann, Widmann**" from HOUSE OF NAMES:

"The **Wideman** surname is derived from the Upper German word "weide," meaning "willow." Thus it was most likely a name originally taken on by someone who lived near a willow tree. First found in the Palatinate in the Rhineland valley, where the name was anciently associated with the tribal conflicts of the area. *(Would like to know more about this. RHW)* Some of the first settlers of this name or some of its variants in America were: **Johannes Widmann**, who came to Philadelphia in 1743; along with **Franz Carl** in 1772; and **Michael Widmann** in 1748; **Johann Friedrich Widmann** came to Philadelphia in 1749."

[www.houseofnames.com/xq/asp/s.Wideman/Origin.GR/sId./qx/coatofarmsdetails.htm](http://www.houseofnames.com/xq/asp/s.Wideman/Origin.GR/sId./qx/coatofarmsdetails.htm)

Other sources attribute the name origin to the nordic w(j)d, the (j) being a runic vowel similar to i or u and together the w(j)d being the stem for the English word, wood, hence the name **Widmann** has as its meaning, woodsman.

Author's note: The 3 grapes cluster motif

appearing in many **Widmann** family crests is exactly the 3 grape cluster arrangement that appears in the coat of arms of the Nekar Valley town of Weinsburg and appears in the painting of **Carlo Aurelio Widmann**, Admiral of the Venetian Fleet, ca. 1798 and in the portrait engraving of **Erasmus Widmann** ca. 1610 as well as in numerous other **Widmann** family crests.

Note 2. The name **Widimanus** appears in a Obergaa, Helvetia court document of 861 as a witness in a goods exchange.

*(Editor's note: we found the **Widmann** family crest on a number of Internet sites but none we could download. Those found did have the three grape clusters described by Robert in his article.*

*All of our efforts to locate the origins of **Christian Weedman, Sr.** are based on the presumption that he was, in fact, from Germany. References in County History articles refer to either German or Dutch ancestry. We believe the reference to Dutch is actually Deutsch or the German language.*

*Most references to birth, marriage and death records for **Widmann** in Germany indicate that Wurttemberg is the likely location of the birth of our ancestor.*

*It would appear that if we could get DNA project participation by some of the **Widmann** family in Germany, the hypothesis of the family origins could be proven or discarded.*

*Obviously, more work is needed but it could be that we are narrowing the places to look for our ancestral home.)*

## Widmann Surname Distribution in Germany

**Robert Widmann** of New York recently supplied us with the location of a site which shows the geographic distribution of the surname, **Widmann**, in contemporary Germany. We had always suspected the roots of the family were in Baden-Württemberg and the distribution map seems to have pointed to origins in southwestern Germany.

The demographic study shows there were 3,563 telephone listings for **Widmann** families in Germany with a total of 9,501 people with that surname living in 249 locations.

Here is a list of where the **Widmann** families currently live:

Munich	167	Furstenfeldburck	97
Rems-Murr-Kreis	144	Esslingen	95
Stuttgart	129	Ludwigburg	94
Ostalbkreis	114	Dachau	91
Boblingen	100	Sigmaringen	87

While this information alone does not mean the family has roots primarily in southwest Germany, it appears this is another indicator of where we should look to find the original home place of **Christian Weedman** (of **Widmann**) in Germany.

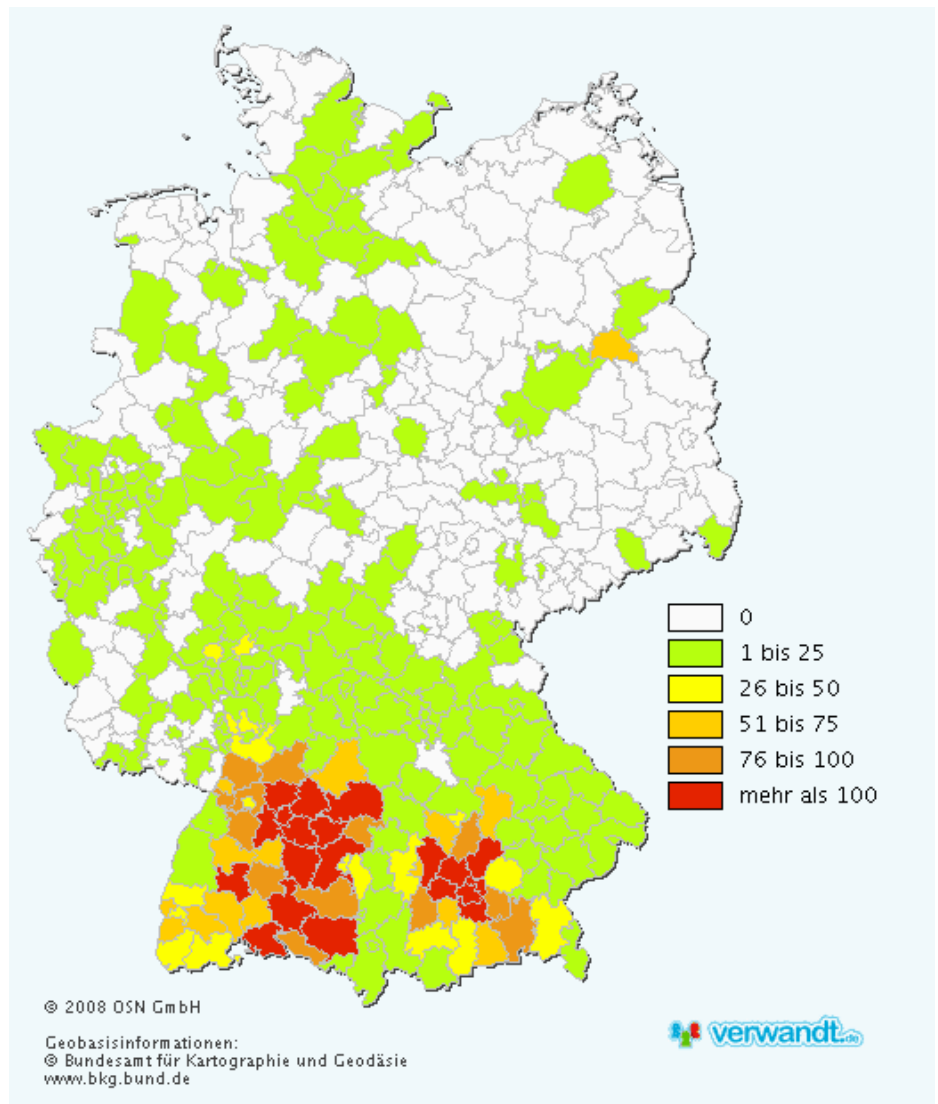
Interestingly, there are few families in Germany with the surname **Widman** (the spelling of the surname with a single "n"). A similar surname distribution map of Switzerland shows few families in that country with either spelling of the surname.

Our thanks to **Robert Widmann** for providing this useful information.

We are hopeful that the color map prints well in black and white for presentation in the printed version of the Weedman Newsletter.

A copy of the surname distribution map is shown on the right and may be found on line at the following:

<http://www.verwandt.de/karten/absolut/widmann.html>



**2012 WEEDMAN NATIONAL REUNION**

Welcome to Grayson County, Ky

August 17 – 19, 2012

Official Welcome you to KENTUCKY

[ROUGH RIVER DAM STATE RESORT PARK /CANEYVILLE REUION](#)<http://parks.ky.gov/parks/resortparks/rough-river/default.aspx>[http://parks.ky.gov/userfiles/aParkBrochures/RoughRiver\\_4Panel\\_2010\\_FINAL.pdf](http://parks.ky.gov/userfiles/aParkBrochures/RoughRiver_4Panel_2010_FINAL.pdf)**REGISTER NOW TIME IS RUNNING OUT****1-800-325-1713 ask for Weedman Reunion block of rooms**

13 rooms at \$80.96 each and 4 cottages \$107.96 each are being held until July 27, 2012.

**Listing Of other lodging near park** <http://parks.ky.gov/parks/nearby.aspx?id=18&cats=Lodging&ret=/parks/resortparks/rough-river/default.aspx&lat=37.6100450&lng=-86.502238>**PLEASE RSVP SHIRLEY WEEDMAN at [sweed88@yahoo.com](mailto:sweed88@yahoo.com)****with # attending by July 30, 2012.****Friday:** Check in Friday - met at campground lot # 47 (far end corner lot closest to the dam and tennis courts look for 35' Coachmen Chapperell 5th wheel) 5pm-9pm for itinerary of weekend events.**Additional event going on in the area:**Free fiddle music at the park Friday night. [kentuckyfiddler.com](http://kentuckyfiddler.com)There's a play at Pine Knob Theater at 8 p.m. The show is *Lucy And Ruth's Diner "LARD"* <http://www.pineknob.com/welcome.htm>

Cruises on the lake, canoeing and kayaking.

**Saturday:** 7:00-10:00 a.m. - Breakfast buffet at Park \$6.95 sausage& bacon on buffet -or go across the street at the Country Porch Swing Restaurant.11:00a.m. - Leave Park to attend Caneyville lunch and **all day event** on 100 year old family farm. **Child friendly event no alcohol please!**

12:00p.m. LUNCH at Weedman family farms.

2:30 or 3:00p.m. - Wagon for rides for fun &amp; also tour 4 graves within 5 mile radius (bring or wear good shoes for little hike to one grave)

There will be swimming, yard games ( Corn hole, horse shoes, yard golf, etc) all day.

There will be a "kids kanopy" with games, crafts and activities, bring extra clothes incase you get wet.

Bluegrass music from family band also provided.

Everyone is welcome to spend the day at the farm and get to know extend family. After eating all day you may not even need supper just a nap under the tree!

This year we're offering free time during the evening so you all can attend local events and see the beautiful area around.

8:00 p.m There's a play at Pine Knob Theater. The show is "*Daddy Took The T-Bird Away*" <http://www.pineknob.com/welcome.htm>**Sunday :** 7:00-10:00 a.m. - Breakfast buffet is available at the Park \$7.95 sausage, bacon, and country ham on buffet or go across the street at the Country Porch Swing Restaurant.

8 or 9:00 a.m. Sunday Service &amp; good-byes.



---

---

# ❖ Weedman Newsletter ❖

---

---

Volume 45 Issue 3

Fall 2012

---

---

## 2012 Weedman National Family Gathering

The **2012 Weedman National Family Gathering** was held from August 17 through August 19 at the Rough River State Park in Grayson County Kentucky and at the farm residence of **Sherry** and **Myron Weedman** in Caneyville, Kentucky. Hosts for the event were **Shirley** and **Cliff Weedman** along with Cliff's brother, **David Weedman**. Sherry and Myron hosted the events on Saturday.

Friday was a travel day and when participants arrived at the Lodge at the Rough River State Park, a hospitality room was there to welcome everyone. Cliff and Shirley operate a bakery in Eighty-Eight, Kentucky and displayed some of their outstanding products for consumption by reunion participants.

Participants included **Col.** (USAF, retired) **Jim Weedman** and his son **Dr. Doug Weedman** of La Vista, Nebraska; **Billie Lou Weedman Bruce** of West Lafayette, Indiana; **Betty Myers Yahn** and **Gene Yahn** of Aurora, Colorado; **Carolyn Frosco, Janet Martin, Barbara Dicks**, and **Kathy Crabtree** (four sisters) from Oklahoma; **Sharon Bryden** of Springfield, IL; **David Weedman** of Louisville, KY, **Cliff** and **Shirley Weedman** of Eighty Eight Kentucky with their two children **Jarrad** and **Hannah**; and, **Merrie Carol** and **Nick Weedman**, Flat Rock, North Carolina.

On Saturday morning, the group motored to the Myron Weedman farm in Caneyville to find a very large group of local Weedman family members in at-

tendance. Annually, a Weedman family reunion is held here and having the two groups merge was an outstanding idea.

Food had been prepared by all of the Kentucky participants and one thing we reaffirmed was that the Weedman women (and men!) are outstanding cooks. We wish we had pictures of the spread because words are inadequate to describe the variety and quality of the lunch. A whole hog had been barbequed and there were so many dishes available that all were fully sated.

The farm is directly across the road from the **Sy Hughes Cemetery** where several family members are laid to rest. A tractor pulled a hay wagon filled with participants to visit the burial site. Later in the afternoon, family musicians played a concert for participants.

The event at the Weedman farm was truly outstanding and highly enjoyable!

Another smaller group went to visit a grave site where some of us had visited at the 1996 Reunion that was held at Bardstown, Kentucky. At that site, the great grandfather of the late **Gena Theiss**, was buried and we wondered if anyone still

*(Continued on page 18)*

---

*The 2012 Weedman National Family Gathering was the 14th in events held every other year since 1984 except for 2010.*

---

---

## *Inside This Issue*

---

<b>2012 Weedman Reunion</b>	<b>17</b>
<b>Burnett Weedman Cemetery</b>	<b>18</b>
<b>Willis Green Family</b>	<b>20</b>
<b>Weedman Land Grants in KY</b>	<b>22</b>
<b>Obituaries</b>	<b>23</b>

---

*The Burnett—Weedman Cemetery has a number of graves that have stones which may have inscriptions.*

*(Continued from page 17)*

knew where it was. **Jerry Weedman** lead a group to visit the site and a report of that visit is in the next article.

The final activity on Saturday was a boat tour of the lake and river at Rough River State Park. There was a lot of water activity on the lake and the tour was beautiful and informative. The captain allowed all of the kids to take turns piloting the boat and that was surely a highlight for them! Their facial expressions told the whole story as each drove the boat!

The Reunion was highly enjoyable and a successful event. Our appreciation goes out to **Shirley, Cliff and David Weedman** for all of the fine efforts and time spent organizing the event. And, a special thanks to **Myron and Sherry Weedman** for allowing the two Reunions to be combined. The opportunity to meet so many of the Kentucky cousins was truly a highlight and provided a memorable occasion!

## **Discoveries in the Weedman-Burnett Cemetery On Little Clifty Creek in Grayson County, Kentucky**

It has been known that the grave of **Willis Green Weedman, Senior** was located in a wooded area next to a cultivated field northeast of Leitchfield, Kentucky. At the 1996 Weedman National Family Gathering held in Bardstown, KY hosted by **Jimmie Birch** and **Alma Weedman** a motorcade went from the Reunion hotel to the **Myron Weedman** farm. And, from there, a group went to the grave site of **Willis Weedman**.

At the time, little thought was given to much more than the beautiful stone which seemed to be alone on the burial site. But when **Jerry Weedman** took a group of about eight people back to the burial grounds at the 2012 Reunion, it was noted that some of the stones that

*(Continued on page 19)*

## **About the Weedman Newsletter**

The *Weedman Newsletter* is a quarterly family publication with emphasis on the genealogy of the Weedman and allied families. It is distributed to interested family members, selected genealogical societies and libraries. Circulation is 120.

The *Newsletter* is edited, published and distributed by **Nick Weedman**. All address changes, new subscriptions, etc. should be sent to him.

Articles for publication in the Newsletter are highly welcomed. They must have some relevance to the family and those with a genealogical flavor are of particular interest.

Editor and Publisher: **Nick Weedman**  
130 Berry Creek Drive  
Flat Rock NC 28731-8531  
E-mail address: [nick@weedman.org](mailto:nick@weedman.org)

**Visit the Weedman Web-page at: <http://www.weedman.org>.**

Queries regarding the Weedman family or allied lines are welcomed. Attention will be given to each and for those which cannot be answered by family genealogists, publication in the *Newsletter* will be made.

The *Weedman Newsletter* is a registered publication (ISSN 0883-7791).

*(Continued from page 18)*

initially appeared to be little more than an outcropping held much more promise.

Someone asked about the other stones and another examined one very closely and found that under the moss and other covering were inscriptions.

**Jerry Weedman** read one stone which appeared to be inscribed: **J. Burnet** (one "t"), died in 1860.

Another stone was read and while the name of the person buried there was not readable, clearly the stone was inscribed.

We have subsequently learned that the cemetery had been catalogued by the Grayson County Historical Society. In the book, *Grayson County Kentucky Cemeteries, Volume I*, 1990, by the Grayson County Historical Society, page 14, the **Burnett-Weedman Cemetery** is shown. Three graves are listed including: **J. (John ?) Burnett**, born 1776, died 1860; **S. B. W. Burnett**, born 1813, died 1860; and **Willis Green Weedman**, born 23 February 1837, died 11 June 1877. The article states there are probably 10 graves here but no more are identified. **S. B. W. Burnett** was likely **Samuel Burnett** or also known as **William Burnett**. In the survey of the land grant received by **John Weedman** in January 1842 on Little Clifty Creek, mention is made that Weedman's land adjoins that of Burnett.

In the work of Gena Theiss, *Christian Weedman and His Descendants 1735 – 1986* Second Revision, 2002, she stated that in the process of cataloguing grave sites for the Grayson County Historical Society a lady, Virginia Stone Armstrong, contacted her advising of the location of the **Willis Weedman** grave. Thus, the location of the cemetery was revealed.

A search of the available census records

are of limited help on the Burnetts. However, it was revealed that a **John Burnett**, born in 1776 in Virginia died in 1860 (Grayson County, Kentucky mortality schedule for 1860) but no clue exists for the other Burnett buried there. Apparently there are a number of Burnett families in Grayson County and if we can learn from them more about the family, we might be able to learn who was buried in that cemetery.

The questions are: could this be the burial site for more Weedman family members than **Willis Green Weedman, Senior?**; are there other inscribed stones that that are covered with moss?; could this cemetery be recognized as such and maintained on a continuous basis?

We have asked **Jerry Weedman** if it would possible to return in the Fall after the soybeans have been harvested and the weeds through which one must wade to get to the cemetery have died back, can



**The Willis Weedman, Sr. grave marker**

*(Continued on page 20)*

*The spelling of the surname on the **Willis Green Weedman, Sr.** tombstone is incorrect. This was not an uncommon happening in the 1800s.*

*(Continued from page 19)*

we visit and clean the stones to see if anything further can be learned. He has agreed and the intent is to return and do some cemetery restoration.

A report on these efforts will be given in the Winter 2012 issue.

---

### **The Names of Willis, Green and Willis Green in the Weedman Family**

The names of **Willis, Green,** and **Willis Green** appear with some consistency in the early Weedman families of three of the sons of **Christian** and **Mary (Marshall) Weedman, Junior.**

The recent Weedman National Family Gathering in Grayson County, Kentucky provided an opportunity to examine the possible reasons for the use of those names. As we will show, **Willis Green** was a prominent individual in Grayson County from about 1820 until the late 1850s. Was there a family connection between **Christian Weedman** and **Willis Green**?

A normal convention is to name children in honor of some family relative. An examination of both families reveals there was no apparent connection through any marriage.

Another possibility is the possibility of a high degree of respect for **Willis Green** by the Weedman families. This would be difficult to prove.

And still another possibility is that one or more family members could have been employed by **Willis Green** and the children were named in honor of this person.

Interestingly, the use of these names occurs exclusively (with a single exception)

in the families of the sons of **Christian Weedman, Jr.** by **John Weedman, William Weedman** and **Daniel Weedman.** **John Weedman** named a son, **Willis Green Weedman (Senior)** who in turn named a son, **Willis Green Weedman, Jr.** **William Weedman** named one of his sons **James Willis Weedman** and another **Green Berry Weedman.** Daniel Weedman had sons **Felix Green Weedman** and **James Willis Weedman.** We can find no ancestors named **Willis** or **Green.**

We will pursue research of the **Willis Green** papers at Western Kentucky University to determine if any of those early papers from 1814 through 1860 provide clues as to a possible connection between the Green and Weedman families. Hopefully, a trip to Bowling Green, Kentucky will allow for that research to occur. There are over 8,000 documents in these papers but narrowing the search to the early years should make research more manageable.

Here is a brief history of the **Green Family** in Grayson County taken from the Western Kentucky University web site:

### **Green Family**

**Willis Green** (1794?-1862) was an early Mississippi River trader engaged in shipping goods from Kentucky to New Orleans. In 1818 he married **Ann Allen** (1795-1877) of Shelby County, Kentucky, and they moved to Hardinsburg where he practiced law. Willis purchased land, formerly owned by Spanish conspiracy plot participant **Benjamin Sebastian** in 1820, at Falls of Rough in Grayson County. As time passed, he developed a farming operation, which included the construction of a sawmill and

*(Continued on page 21)*

---

*Research will be done to see if some of the Weedman family were possibly employed by Willis Green. Records are on file at Western Kentucky.*

---

*(Continued from page 20)*

a gristmill. **Willis** served in the U. S. House of Representatives from 1839 to 1843. He also was very active in **Henry Clay's** 1844 campaign for the presidency. In 1859, Willis and his wife moved to Texas due to his ill health.

Nephews and nieces of **Willis**, children of his brother **Morgan B. Green** (b. 1805), were living with the Greens by 1845 including **Lafayette Green**. Lafayette (1835-1907) studied law in Lexington. In addition, Lafayette worked in various Louisville merchandising establishments, receiving training that helped prepare him to manage the Falls of Rough operations. Because of his uncle's declining health, Lafayette became the family's financial head. He also served in the State House of Representatives from 1859 to 1861. Following his uncle's death in 1862 and while the Civil War was raging, Lafayette went to Texas to

accompany his aunt back to Kentucky and to bring his uncle's body back for reinterment.

In 1866 Lafayette married Rebecca Eleanor "Ella" Scott daughter of Robert Wilmot Scott and Elizabeth Watts (Brown) Scott of Frankfort. The Greens had five children, none of whom married.

Lafayette and his sons increased operations and began new ones at Falls of Rough, which included lumbering, flour milling, selling tobacco, raising Shetland ponies, a post office, a bank, and a general store. Because of their transportation needs for business purposes and to provide passenger service, a railroad line was extended to Falls of Rough in 1891. Their house, which was built of home-grown products (stone that was cut on the place and lumber that was cut and dressed at the mill), was a beautiful

*(Continued on page 22)*

*The Willis Green home shown on this page was built when Christian Weedman, Jr. and much of his family lived in the area.*



**The Willis Green home at Falls of Rough, Kentucky built about 1823 when the Weedman Family was well established in the area along Rough Creek or Rough River**

*Research will be conducted to determine the exact location of the three Weedman land grants in Grayson County, Kentucky.*

*(Continued from page 21)*

manor dwelling. Ella and her daughter Jennie were gracious hostesses, entertaining many friends and acquaintances through the years.

The children were educated at home by teachers employed by their parents, and later attended various private schools. All three sons were Centre College students; but Jennie, while in her teens, terminated her formal education and remained at home to assist her ailing mother with management of the house and family. None of the children ever married. After her brothers died, Jennie continued to oversee all the operations of the small empire until her health declined. The estate passed to a distant cousin from Texas and was sold to developers in 2000.

### **Kentucky Land Grants to Weedman Family Members**

The interest in finding the locations of land grants made to Weedman family members stems from a desire to know where the family actually lived in the 1790s and 1800s up until about 1850. There were four land grants made, three of which were in Grayson County. Contact needs to be made with the Kentucky Land Office to determine if actual surveys can be obtained to match the contour of streams and adjacent land owners.

The initial land grant was made to **Christian (Christopher) Weedman** for 150 acres in Pulaski County on Canadas Creek. The grantee had to be 21 years of age or older and must have lived on the land for one year. The date of the survey was 28 June 1799 and the source of this information was contained in *Grants South of Green River*. We have been unable to locate Canadas Creek and recently visited Somerset, KY, the county

seat for Pulaski County, only to find no record of land being obtained or sold by a Weedman in this County. However, tax lists do show residence there for a short period.

The next land grant was to **Christen (Christian) Weedman** for 50 acres in Grayson County on Rough Creek dated January 28, 1828. The land was sold for \$20 per 100 acres. The source of this information was contained in *Kentucky Land Warrants*.

**John Weedman** obtained two grants both of which were on Little Clifty Creek in Grayson County. The first grant was for 100 acres and was received on 13 October 1829 while the second was for 49 acres on 10 March 1841. The source of this information was *Kentucky Land Warrants*. A single survey is in hand which shows the land grant being adjacent to land owned by **Samuel Burnett**.

Little Clifty Creek flows into Rough River (formerly Rough Creek) and is a fairly short stream. It is likely that the land obtained by **John Weedman** is reasonably close to that of his father, **Christian Weedman, Jr.** but these needs to be researched.

Again, we feel it is highly likely that the Burnett Weedman cemetery is on land or very near to land owned by either **John** or **Christian Weedman, Jr.** but additional work is needed to prove this. The loss of deed and other records in a series of court house fires in Grayson County makes research into this subject a challenge.

*Graduation*

*(Continued on page 23)*

## Ashley Storm Weedman

**Ashley Storm Weedman** graduated from Central Hardin High School in Cecilia, KY this past May, 2012. She is attending Elizabethtown Community and Technical College (ECTC) enrolling in the Fall, 2012. She will get an associates degree in early child hood (elementary) education and pursue either a bachelor in education or a bachelor in sign language communications at another institution. Source: **Timothy Weedman**, Elizabethtown, KY

---

### Obituaries

## Lynn M. Weedman

**Lynn M. (Ace) Weedman**, 57, of rural Glenville, Minnesota died September 5, 2012, at the University Medical Center in Iowa City, Iowa, as a result of a motor vehicle accident.

He was born May 26, 1955, in Fort Dodge, Iowa, to **Maynard** and **Ruth (Cadam) Weedman**. He grew up in Clarksville, Iowa, and graduated from Clarksville High School. From 1973 to 1975, he served in Vietnam. Lynn then lived in Freeborn County working as a mechanic. He also built bikes and did woodwork and metalwork.

A member of Austin Christian Fellowship, Lynn liked asparagus hunting and riding motorcycles. He rode with the Southern Minnesota Bond Slave Motorcycle Club and was their president. He was a leader who liked to help people whenever he could. Lynn also served as a certified, ordained minister.

Survivors include his fiancé, **Kelly**, of Glenville; three sons, **Titus** of Glenville, **Quentin** of Blooming Prairie, and **Michal** of Waterloo, Iowa; **Erick Power** and **Breanna Power**, both of Austin; two grandchildren; brothers **Jim (Jan) Weedman** of Boone, Iowa, and **Dale Weedman** of New Hartford, Iowa; nephews. He was preceded in death by his parents **Maynard** and **Ruth Weedman**.

*His Weedman lineage was: Lynn Maynard Weedman<sup>8</sup>, Maynard Marion Weedman<sup>7</sup>, John William Weedman<sup>6</sup>, Henry Linas Weedman<sup>5</sup>, Asa Weedman<sup>4</sup>, John Huhn Weedman, Sr.<sup>3</sup>, George Weedman<sup>2</sup>, and Christian Weedman, Sr.<sup>1</sup>.*

## Charles W. Weedman

**Charles W. Weedman**, 95, Lenexa, KS, passed away on October 14, 2012, at Lakeview Village Care Center in Lenexa. Services were on October 18, 2012 with burial in Elmwood Cemetery, Kansas City, MO.

He was born August 10, 1917 in Perkins County, S.D. to **Ona** and **Lelia Weedman**. He graduated from University of Missouri at Kansas City Charles married **Bettie (Merchen) Weedman** September 7, 1948 in Kansas City, MO. He served as Navigator Bombardier in the Army Air Corp in WWII and the Korean War. Charles operated and owned a hardware store in Emporia, KS from 1961 to 1971 when he sold the business and moved to Trenton, MO. He later owned and operated a Radio Shack and hardware business in Trenton until 1986 when he sold the business and retired.

Charles was preceded in death by his wife of 58 years, Bettie, his mother and father, sisters: **Pauline Weedman** and **Arlene Shillingburg** and brothers, **Myron** and **Gail Weedman**. He is survived by nephews and nieces.

*His lineage: Charles W. Weedman<sup>7</sup>, Ona Harrison Weedman<sup>6</sup>, William Martin Weedman<sup>5</sup>, Jeremiah Weedman<sup>4</sup>, Jacob Weedman<sup>3</sup>, George Weedman<sup>2</sup>, and Christian Weedman, Sr.<sup>1</sup>.*



### Jeff Davidson Owen Weedman, Jr.

**Jeff Weedman**, 71, of Norris City, Illinois died on August 18, 2012, at Ferrell Hospital in Eldorado, Illinois. He was born August 16, 1941, in Breckinridge County, Ky., the son of **Jeff Davidson Owen Weedman** and his wife, **Ethel Mae (Ford) Weedman**. He married **Shirley Sago** on March 24, 1962, and she survives.

**Jeff** was a minister and member of the New Life Apostolic Church in Carmi. He enjoyed walking, fishing, bible study and witnessing his faith to others.

Survivors include his wife, **Shirley**, of Norris City; sons, **Ronald Lee Weedman** of Norris City, **Jeff David (Tina) Weedman** of Sparta, Tenn., **Robert (Debbie) Weedman** of Carmi, **Daniel Ray (Anita) Weedman** of Norris City, **Ronald Jonathan (Heather) Weedman** of Sparta, Tenn.; daughters, **Debra Corinne Weedman** of Norris City, **Sheryl Lynn (Jason) Leadingham** of Norris City, **Amanda (Steven) Schroeder** of Carmi; brother **Roy Thomas Weedman** of Cloverport, Ky.; sisters, **Stella (Bill) Simms** of Lyon County, Ky., **Nancy Sinclair** of Tell City, Ind., **Dorothy Canary** of Fordsville, Ky., **Janie Sanders** of Hancock County, Ky.; 17 grandchildren; and four great-grandchildren.

He is preceded in death by his parents; brothers, **Leonard, Joe, Ernie** and **Jim**; and sister, **Mary Alice**.

The funeral was on August 22 with burial in Oddfellows Cemetery in Norris City.

*His Weedman lineage was: Jeff Davidson Owen Weedman, Jr.<sup>7</sup>, Jeff Davidson Owen Weedman, Sr.<sup>6</sup>, James David Weedman<sup>5</sup>, William Weedman<sup>4</sup>, John Weedman<sup>3</sup>, Christian Weedman, Jr.<sup>2</sup>, and Christian Weedman, Sr.<sup>1</sup>.*

### Minnie Lucille Weedman Russell

**Minnie Lucille Weedman Russell**, age 81 of Cloverport, KY died Friday, July 20, 2012 at University Hospital in Louisville, KY. She was born in Lewisport, KY on September 4, 1930, the daughter of the late **Robert** and **Eloda (Yeager) Weedman**. She attended Cloverport Baptist Church and enjoyed dancing.

She was preceded in death by her brothers: **James, Walter** and **William Weedman**.

Minnie is survived by 3 children: **Toni Rose** of Fairfield, CA, **Wayne Russell** of Napa, CA **Roger Russell** of Troy, IN, 1 brother: **Terrell Weedman** of Valley Station, KY and 3 grandchildren: **Holly Rose-Beltran, Heather Rose** and **Ashley Russell** as well as 3 great grandchildren

Funeral services were on Thursday, July 25, 2012 with burial in the McQuady Cemetery, McQuady, KY.

*Her Weedman lineage was: Minnie Weedman Russell<sup>8</sup>, William Robert Weedman<sup>7</sup>, James Oscar Weedman<sup>6</sup>, James David Weedman<sup>5</sup>, William Weedman<sup>4</sup>, John Weedman<sup>3</sup>, Christian Weedman, Jr.<sup>2</sup>, and Christian Weedman, Sr.<sup>1</sup>.*

### Orval Gail Brown

**Orval "Gail" Brown, Sr.**, 94, died at his home in Porterville, CA on November 16, 2011. He was a son of **Alvin Austin** and **Orva Susie (Weedman) Brown** and was born 28 July 1917 in Armorel, Arkansas. He married **Louise Querry** in 1944 and they had three children: **Patricia Ann, Orval Gail, Jr.**, and **Bonnie**. His wife, children, grandchildren and great grandchildren survive. He was a farmer and owned a sheet metal shop in Porterville.

*His Weedman lineage was: Orval Gail Brown<sup>7</sup>, Orva Susie Weedman Brown<sup>6</sup>, Charley Green Weedman<sup>5</sup>, Green Berry Weedman<sup>4</sup>, William Weedman<sup>3</sup>, Christian Weedman, Jr.<sup>2</sup>, and Christian Weedman, Sr.<sup>1</sup>.*



---

---

# ❖ Weedman Newsletter ❖

---

---

Volume 45 Issue 4

Winter 2012

---

---

## Final Issue

Baring unforeseen developments, this will be the final issue of the *Weedman Newsletter* as a periodic publication.

The Newsletter was started in 1967 by **Paul** and **Marianne Montgomery** and had the effect of putting efforts of a number of people who were interested in the history and genealogy of the Weedman family all together. Marianne was the de facto editor and Paul did much of the compilation and organization of data. Paul died in 1988 and Marianne continued to produce the Newsletter as a labor of love. In December 2005, Marianne retired and for a period of time **Chantal Weedman** was the editor.

The reasons for making this the final issue are several. First, frankly is burn out. We have been editing or publishing for more years than I care to recall. While there is still significant support, there are fewer and fewer sources of articles for publication. As a result, there is a significant amount of effort and time required to assemble each issue. Health is another reason. While my recovery from open heart surgery in November 2011 is complete, the lack of stamina, energy and ability to give needed concentration to the on-going efforts is simply not present.

We continue to get inquiries about family origins and how individuals fit into the family and the web site gets interest from those seeking family information. But it appears that there are few doing what old timers would call basic or fundamental research on the family. It

seems if information is not on the internet and readily available, there is an assumption that facts regarding the family doesn't exist. This isn't true but you don't hear of court house or archival research being conducted very much.

If a volunteer steps forward and is willing to assume the position of Editor, then it is possible that publication could continue. Wouldn't it be nice to see Volume 50 in print!

And, it is likely that if significant discoveries are made, then the occasional Special Edition can appear.

Failing these, however, this will be it.

We still have an objective of attempting to find our European roots and despite the finality of this publication, efforts to discover those will continue. Let us take a bit of space and discuss special projects we now have or have had in the past and comment on whether they are worth continuing.

*(Continued on page 26)*

## Inside This Issue

<b>Ship Anderson Passenger Project</b>	<b>26</b>
<b>Weedman DNA Project</b>	<b>27</b>
<b>Swedish Weedman DNA Project</b>	<b>28</b>
<b>Find-A-Grave Project</b>	<b>29</b>
<b>Obituary</b>	<b>30</b>

---

*This will be the final issue of the Weedman Newsletter as a periodical publication unless someone volunteers to assume the editorship.*

---

(Continued from page 25)

### Ship Anderson Passengers Project

For those whose lineage goes back to **Christian Weedman, Senior** the attempts to learn where passengers on the vessel on which he arrived originated and ultimately settled in the United States was the purpose of this project.

We believe **Christian Weedman, Senior** was about 15 years old when he arrived in Philadelphia in August 1750 on the ship Anderson. The voyage began in Rotterdam and had an intermediate stop in Cowes, England. From the ship's manifest, we have a complete list of passengers and we note and he was the only person with that surname on the voyage. One publication shows the signatures of the passengers as they signed an oath of allegiance to the King of England upon disembarking. The spelling of the surname appears to be **Widman** or **Widmann**.

We have speculated that it was unlikely that he traveled alone. It is thought that he came from the Palatine area of southwestern Germany because the ship Anderson like so many others during that period brought immigrants from that area. Indeed, there has been reference to the vessel being part of a Palatine immigration effort.

It is unclear if he traveled alone or possibly with other family members with a different surname such as a married sister or aunt or uncle. Or, perhaps he was a member of a group that traveled together to the new world? Or, perhaps family or church members had preceded his journey and he was joining them in America? Or, was he an indentured servant who had to work on his arrival to pay for his passage to his country?

We believed if we could identify the origin of the passengers on the ship Anderson, we could get an idea of where

(Continued on page 27)

*Christian Weedman, Senior was a passenger on the ship Anderson which landed in Philadelphia in August, 1750.*

## About the Weedman Newsletter

The *Weedman Newsletter* is a quarterly family publication with emphasis on the genealogy of the Weedman and allied families. It is distributed to interested family members, selected genealogical societies and libraries. Circulation is 120. The Winter 2012 issue is intended to be the final one.

The *Newsletter* is edited, published and distributed by **Nick Weedman**. All address changes, new subscriptions, etc. should be sent to him.

Articles for publication in the Newsletter are highly welcomed. They must have some relevance to the family and those with a genealogical flavor are of particular interest.

Editor and Publisher: **Nick Weedman**  
130 Berry Creek Drive  
Flat Rock NC 28731-8531  
E-mail address: [nick@weedman.org](mailto:nick@weedman.org)

Visit the Weedman Web-page at: <http://www.weedman.org>.

Queries regarding the Weedman family or allied lines are welcomed. Attention will be given to each and for those which cannot be answered by family genealogists, publication in the *Newsletter* will be made.

The *Weedman Newsletter* is a registered publication (ISSN 0883-7791).

(Continued from page 26)

**Christian Weedman, Sr.** originated. And, with more work, we could learn where the passengers settled once they disembarked.

A special page on the web site was established which lists all of the passengers and research was done to determine origins and where the families ultimately settled.

While some progress was made, we learned it was difficult to find origins or destinations of the passengers. There is the occasional inquiry by genealogical researchers whose ancestors traveled on the Anderson but no definitive pattern has been able to be detected.

The hypothesis seems valid and we will continue to work to better understand any relationships of families on the Anderson. The web site page will be maintained and we will continue to research passengers over time.

### Weedman Family DNA Testing

If we are ever able to find our European roots, it is very likely this will be done through DNA testing.

This is an entirely new area for genealogical research and as increasing test results become known, there will be a time in the future when we will be able to state with a high degree of certainty where our European roots originated.

And this is potentially a highly effective tool for all of the various branches of the Weedman family.

We have been able to get several to participate in this early project and have been able to make several definitive conclusions.

Participating so far are: **Freeman James (Jim) Weedman** who descends from **Christian Weedman, Sr.** through his son, **Jacob Weedman**; **William Bruce (Bill) Weedman** who also descends from **Christian Weedman, Sr.** through his son **Christian, Jr.** and grandson, **Stephen Weedman**; **Harry N. (Nick) Weedman** who similarly descends from **Christian, Jr.** and his son, **William Weedman**. Also participating is **Earl Joseph Weedman** who descends from **Philip Weedman** whose origins are from Mainz, Germany and whose line is frequently referred to as the Florida Weedman line. Finally, another participant is **Richard Widmann** whose family roots are traced back to Germany.

One of the first findings was that the three participants who descend from **Christian Weedman, Sr.** do not have exact DNA matches! We learned early that some of the sites on DNA samples tend to mutate over succeeding generations and we proved that with our testing!

We also found that **Earl Joseph Weedman's** DNA results prove there is not a recent relationship between the Florida Weedman families and those descended from **Christian Weedman, Sr.** We had hoped that if there was a proven relationship, we could pursue more intensive research of family origins in the Mainz Germany area. It was known however, that there appeared to be two brothers who emigrated from Germany simultaneously and those were **Philip Weedman** and **Bernard Wiedeman**. Bernard settled in what is now the panhandle of West Virginia while Philip started his line based in St. John County near St. Augustine, Florida. The spelling of the surname for Bernard's family has a number of variations. And, interestingly, one branch was and possibly remains in Fay-

(Continued on page 28)

*The use of DNA technology in genealogy is predicted to be the tool which will help reveal our European roots.*

*It is important to obtain DNA samples while direct male descendants from each line are still alive! Once the line has been depleted, no testing is possible.*

*(Continued from page 27)*

ette County, PA where Christian Weedman, Sr. lived in the late 1700s.

Here is where added testing would be highly beneficial. Contact has been made with one family member who descends from **Bernard Wiedeman**. It is highly desirable for a participant from that line be tested to help prove the relationship between **Philip** and **Bernard Weedman** or **Wiedeman**. Those test results would be of extraordinary value if we are ultimately able to find potential descendants from family members who remained in Germany. And, this may be the only tool which could essentially prove those relationships.

**This portion of the DNA project should be continued and expanded.**

### **Swedish Weedman DNA Project**

There are currently no participants in the Weedman DNA project from the Swedish Weedman family.

The original progenitor of this line in the U.S. was for many years to have believed to be **Olaf Weedman**. Olaf and his wife Brita immigrated to the U. S. from Ockelbo, Sweden in the 1840s and settled in Knox County near Galesburg, IL. But further research indicated that there were in fact three brothers who ultimately came to the U.S. from Sweden with Olaf being the first.

It appears that Olaf was the oldest brother and he was the first to immigrate. But it appears that he had two siblings who also came here and settled originally in Knox County. **William Jonas Weedman** immigrated about 1870 with his wife and two children. Also, **Peter Weedman** and his wife also immigrated.

It is believed these were three brothers.

Since family members have visited the original home in Sweden and made contact with Swedish relatives, participation in the DNA project is perhaps of lesser importance than for other branches. However, if it is desirable to produce definite proof of relationship between the three brothers and their Swedish relatives, it is important to collect DNA samples for this purpose. It appears there were no children from **Peter Weedman**'s line and there appears to be a single male descendant from the **Jonas Weedman** family.

Let us point out that the most common DNA testing involves the Y chromosome which is passed from father to son and is thus confined to the direct male lines. There is similar testing that is passed from mother to daughter but that is not as commonly used as the male line testing. The point is that it is essential to obtain DNA samples from family members while there are still male descendants living.

**This portion of the DNA project should be continued and expanded.**

### **Christian Weedman, Senior DNA Project**

One of the puzzles of this line of the family genealogically speaking has always been, where did we originate? Are we German, English, Dutch, Swiss, or maybe Austrian. Most speculate that we have German roots while some think we are Dutch. **If we are ever going to make a definitive finding, the most likely answer will most likely come from DNA testing.**

As mentioned earlier, we have several

*(Continued on page 29)*

*(Continued from page 28)*

participants whose ancestry can be traced to Christian Weedman, Senior. And, in the process of working our way through the DNA test results, we found there is some (hopefully minor) variation in the results. It appears that some of the sites on the Y chromosome are prone to mutation while others remain intact while being passed from generation to generation.

The results of the DNA test on **Robert Widmann** whose roots are known to be German have a great deal of similarity to those of the participants that descend from Christian Weedman, Sr. Most of the people who have worked on our genealogy believe our roots are in Germany.

Here are the steps needed to bring this project to fruition. First, we need to have a broader base of DNA tests on which to base our conclusions. More participants in the direct male line from Christian Weedman, Senior would help to give greater confidence in results if we have test results from potential German participants. Second, we need to identify Widmann families in Germany who might be candidates for participation and determine if they have good lineage records going back to the early 1700s. Third, we need to persuade several candidates to participate in DNA testing. The third step is the most difficult but is not unachievable.

It would also be helpful to identify resources with expertise in DNA testing to advise on the results obtained. It is unlikely we will obtain exact matches because as we have seen in our very small base of data, even those known to be related have some variation in the test results.

DNA testing is not cheap and the establishment of a fund to help offset or even totally fund testing is needed. The use of the FamilyDNA firm to handle the test-

ing is highly recommended so that all DNA test results are done in a similar manner with all the results maintained by one firm. In addition, Y-chromosome testing of a minimum of 25 test sites should be our standard.

**If there is any interest in the family on a definitive project to find our European roots, the DNA test project is well worthwhile and may represent the only way we can establish with a high degree of probability of where our ancestors lived before 1750.**

### **Weedman Find-A-Grave Project**

The Find-A-Grave project is a relatively new but highly popular web site on which graves are listed along with photographs, obituaries, and other information. It is extremely useful and we have been able to locate "lost" family members using this resource.

One success story is that of **William Melvin Weedman** who was the only child of the second marriage of **John Huhn Weedman, Sr.** with **Minerva Yazell**. After the death of his first wife, John married Mrs. Yazell in 1855 and in 1859 a son, **William Melvin**, was born. Soon the family moved to Webster City, Iowa where John died in 1868. The widow and young son returned to DeWitt County, Illinois where she ultimately married for a third time. We found **William Melvin** in the 1870 and 1880 census records but after that he seemed to disappear. It was assumed that he died but no grave or death record could be located.

Using the Find-A-Grave web site, we found a grave in north central Oklahoma for a Mel Weedman and the date of birth

*(Continued on page 30)*

*The Find-A-Grave web site is free and is an excellent place to show family burial sites as well as list obituaries.*

*Scott Parish of DeWitt County, IL has done an excellent job of photographing Weedman family tombstones in several states!*

*(Continued from page 29)*

seemed to fit that of **William Melvin Weedman**. More research revealed that this was, in fact, the son of **John** and **Mi-nerva Weedman**. We learned he had appeared in southern Kansas, married and moved to Oklahoma where he home-steaded. There were three daughters born to the couple, none of whom had children. But successful contact was made with a person who was friends with the daughters and we were able to learn quite a bit about the family. All of this success had roots in the Find-A-Grave web site.

We have a project to identify and register Weedman and related families grave sites and to list them on the Find-A-Grave web site. An enthusiastic participant, **Scott Parish** of DeWitt Co. IL, has worked diligently to locate and list graves. Over the years, we have taken numerous photos of family member tombstones and will be adding those as time permits.

This is another project in which numerous family members can participate and we encourage you to do that. It will prove helpful for future generations and they attempt to learn about their family history. We encourage you to participate. The web site is: [www.findagrave.com](http://www.findagrave.com). There are almost 600 Weedman graves listed as of December 2012 and more are added frequently.

*Obituary*

### **Elton Ray Weedman**

**Elton Ray Weedman**, 72, of Louisville KY, passed away at Hosparus Inpatient Unit on November 15, 2012.

Elton is preceded in death by his parents, **Alton** and **Lena Weedman**; siblings, **Marvin Weedman**, **Loyd A. Weedman**, **Henry Weedman** and **Juanita Weed-**

**man**.

Elton is survived by his loving wife of 50 years, **Wanda Farmer Weedman**; children, **Teresa Schultz (Steve)** and **Steve Weedman (Jamie)**; granddaughter, **Michelle (Sean)**; and siblings, **Katherine Cook**, **Lillian "Odean" Wheeler (John)**, **Erma Spencer**, **Wilma Whitehead (Curtis)** and **Howard Weedman (Barbara)**; and his dog, Snuggles.

A funeral service was held November 19, 2012 with interment in Evergreen Cemetery in Louisville.

*His Weedman lineage: Elton Ray Weedman<sup>7</sup>, Alton Weedman<sup>6</sup>, James Henry Weedman<sup>5</sup>, Willis Green Weedman, Sr.<sup>4</sup>, John Weedman<sup>3</sup>, Christian Weedman, Jr.<sup>2</sup>, and Christian Weedman, Sr.<sup>1</sup>.*

So, with this, we bring the *Weedman Newsletter* to a close. It has been enjoyable and has provided an opportunity for us to meet many of our extended family.

So many before us have contributed with their family research including **Gena Lee Theiss** and **Marianne Montgomery**. We intend to continue to investigate family origins and will share those results primarily on the Weedman family web site ([www.Weedman.org](http://www.Weedman.org)).

If you have information you want to share, let me know and I will do my best to keep the web site up to date.

And, thanks to so many who contributed financially to help off set the costs of doing this publication for 45 years.

*Sincerely*

*Nick Weedman*